



Save-a-mate:

Trust joins forces with the Red Cross to work with youth in the Wimmera

The Trust has joined forces with the Australian Red Cross (Victorian Division) to establish a *save-a-mate* (SAM) program in the drought affected Wimmera region.

SAM is a program run by young people for young people and works to promote health and wellbeing through education on key youth health issues, particularly those related to alcohol and other drug use and mental health.

Under the program, young people are encouraged to take responsibility for themselves, their friends and others around them. SAM works within a peer education and harm minimisation framework and equips young people (15-24 years) with the skills to recognise, prevent and respond to potential emergencies that may arise as a result of alcohol and other drug use.

In March 2008 the Australian Red Cross was presented with an International Senlis Council Award for the program. The honour was presented at a function during the UN's Committee on Narcotic Drugs meeting in Vienna.

SAM has been successfully delivered elsewhere in Australia for over 10 years. Last year there were 300 SAM volunteers, more than 10,000 participated in training and 31,000 were recipients of peer education at festivals and events where safe partying, peer support, health promotion and at times first aid was provided.

The program will run over three years, and will involve the intensive training of volunteer peer educators. 170 SAM 'Emergencies' sessions will be conducted with more than 3,200 young people and the delivery of health promotion messages at up to five

youth events in the region to more than 5,000 attendees. Victoria's Red Cross will also establish a regional office in Horsham as part of this program to provide on-going program support. This is a major youth initiative for the Wimmera region and will be further refined following local community consultation.

The *save-a-mate* program is jointly funded by the Trust and Red Cross with each contributing \$150,000 over three years. For more information, visit www.saveamate.org.au ■

Female Fellows

In 1990, the Trust gave a grant to the Melbourne Business School to establish the Helen Macpherson Smith Fellowship to assist women studying for an MBA. Trustees and staff were delighted to recently attend a lunch with some of the past and present Fellows. It was a great opportunity for the Trust to meet with individuals who have benefited directly from one of our grants and to hear of the impact it has made on their lives.



In the photo Darvell Hutchinson, Chairman of the Trust (far left) and Professor John Seybolt, Dean & Director of Melbourne Business School (far right) stand with past and present recipients of the School's Helen Macpherson Smith Fellowship. ■

Documenting historic Koorie art & artefacts of SE Australia

The Trust has made a grant of \$80,750 to the Koorie Heritage Trust to produce a detailed reference book on the Aboriginal artefacts and art works of SE Australia. Running to approximately 200 pages, the text will become the ultimate reference book for this region and a resource for the Koorie community, researchers and the general public. It will be produced in colour and will include an extensive collection of photographs.

Currently there are very limited resources on Aboriginal artefacts and artworks from SE Australia. Astonishingly, the key reference books are more than 100 years old, being Brough Smyth's *The Aborigines of Victoria* published in 1878, and AW Howitt's *The Native Tribes of south eastern Australia* published in 1904.

This project aims to develop a collaborative partnership between collecting institutions and Koorie communities by drawing together the cultural and historical materials held in such institutions (for example, the journals of George Augustus Robinson from the 1840s etc) and the cultural knowledge and oral histories of Koorie elders, artists and communities. ■

www.koorieheritagetrust.com

Keeping St John's on the road

St John Ambulance Australia (Victoria) Inc has a fleet of 65 ambulances with an average age of 12 years (with the oldest first registered in 1967) and most having travelled over 350,000kms! St John has to raise the funds for the maintenance and replacement of its fleet – with each ambulance costing \$119,180 to replace.

The ambulances are on 24/7 standby and in addition to emergencies as part of the State's Emergency Response Plan, in 2007 were used by over 2,778 volunteers and were on-site at 5,898 events through-

out Victoria. Each ambulance needs to be configured to a very similar specification to those in the metropolitan and rural ambulance fleet so that in emergencies a St John ambulance or government ambulance can be deployed by a trained volunteer or professional in a safe and expedient manner.

St John provides an essential service to all Victorians and relies solely on fundraising. The Trust is pleased to provide a grant for one new replacement ambulance.

Pictured below is the St John Ambulance Advanced Casualty Management Team (ACMT). This team is a highly skilled group of medical professionals and include doctors, nurses and paramedics. They provide advanced pre-hospital care to patients at designated mass gathering events alleviating the pressure these events place on the broader health system. ■

www.stjohnvic.com.au



Support for the Yorta Yorta

The Trust has approved a grant of \$40,000 paid over two years to help the Yorta Yorta people potentially establish the Barmah Forest as a co-managed national park.

The project seeks to harness the political and networking expertise of Friends of the Earth and the legal expertise of Arnold Bloch Leibler to directly benefit the Yorta Yorta people in their efforts to negotiate an effective partnership with the State Government.

A full-time coordinator will be recruited to assist Yorta Yorta participants in the process and undertake research, capacity building and conducting workshops.

This project will work in conjunction with the Barmah Millewa Collective and is primarily an environmental advocacy program to allow the Yorta Yorta to effectively participate in the process to achieve Victoria's first workable joint management arrangement. The effective engagement of the Yorta Yorta is a precondition of the possible establishment of the Barmah National Park and it being co-managed with the Traditional Owners. ■

www.melbourne.foe.org.au



Yorta Yorta lead a tour of the Barmah Lakes, pointing out elements of the cultural economy, including native species still used for medicines, foods and handcrafts.

Reducing violence and bullying

Solving the Jigsaw is a multi-award winning and accredited best practice program that works with students, teachers, parents and the whole school community to change the culture of violence and build a culture of well being.

Run by Emergency Accommodation and Support Enterprises (EASE) in conjunction with schools in the Loddon Campaspe Region of northern Victoria, an area encompassing Bendigo, Echuca and Kyabram, the program has been running for eight years and is highly successful in providing an appropriate way to address the growing problem of bullying and violence at home and in schools.

A film crew recorded elements of the program primarily for training purposes and now a new documentary using this existing footage titled 'Kids Business - Solving the Jigsaw' will be screened by the ABC later this year.

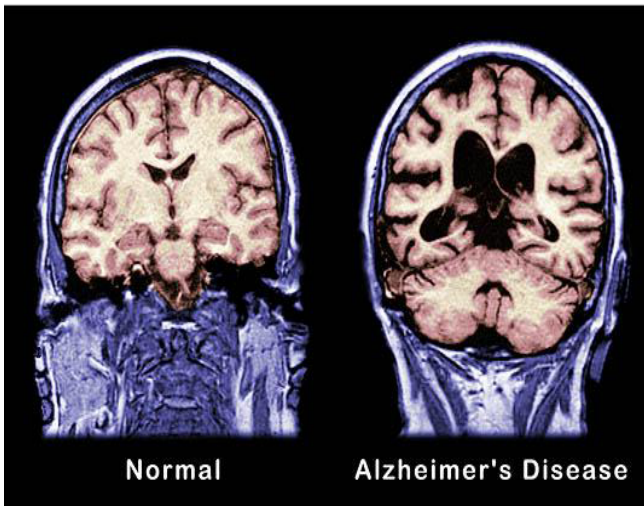
Prior to the screening of the documentary, a pre-screening is required to place the program in context with a wide variety of stakeholders i.e. schools, community agencies and service providers, so that they are able to respond appropriately. The Trust is providing \$26,700 to fund key briefings and pre-screenings of the documentary and the development of program materials and teacher resources so that they can be used by other agencies who wish to undertake a similar program as a result of the documentary. ■

www.solvingthejigsaw.org.au

Reversing the 'Brain' drain

The Trust has provided a grant of \$74,000 to increase the control resources in the Victorian Brain Bank Network.

In conjunction with the Victorian Institute of Forensic Medicine the project involves the collection, processing and storage of 40 new control brain specimens. The specimens will allow researchers to undertake research with these new suitably matched control subjects, into Alzheimer's disease, bipolar mood disorder, depression, Motor Neurone disease, Parkinson's disease, schizophrenia and other neurological and psychiatric diseases.



The Brain Bank is housed at the Mental Health Research Institute (MHRI) and collects, processes and stores post-mortem brains for access by Australian and International researchers. Currently they provide 48% of the cases available for such research in Australia.

This is an important medical and research resource based in Melbourne and requires support to continue Melbourne's position as the leading centre for clinical and research endeavours in neuropsychiatric disorders.

www.mhri.edu.au/NNTC.htm

Grant Statistics

Grants Approved Round 3: June 2008

Total number of applications received:	112
Total number of grants approved:	46
Total amount granted:	\$1,549,312

Grants approved by Sector

Aged Care

6 grants totalling \$106,000

Arts, Culture & Heritage

11 grants totalling \$358,250

Community Support

11 grants totalling \$508,580

Disability Care & Support

7 grants totalling \$184,340

Education

2 grants totalling \$46,700

Employment & Vocational Training

2 grants totalling \$28,617

Environment

1 grant totalling \$40,000

Health

5 grants totalling \$276,825

Grants approved 18 June 2008

Aged Care

Echuca Benevolent Society Inc
www.echucaca.com.au
Relocation of Englebert Lodge
\$20,000

Housing For The Aged Action Group Inc
www.older tenants.org.au
Aged Persons Care and Support
\$10,000

Lyrebird Villages for the Aged Inc
51 High Care Bed Extension
\$20,000

Melbourne Legacy
www.legacy.com.au
Cooking for One or Two
\$6,000

Old Colonists' Association Of Victoria
www.ocav.asn.au
81 Bed Aged Care Redevelopment, Leith Park
\$30,000

Shepparton Villages
www.sheppvillages.com.au
Banksia Lodge \$2m Capital Appeal
\$20,000

Arts, Culture & Heritage

Australian Print Workshop
www.australianprintworkshop.com
Australian Print Workshop: Building the Future
\$80,000

Chamber Music Australia
www.chambermusicaustralia.com.au
Chamber Music Australia at BMW Edge
\$15,000

Daylesford and District Municipal Band Inc
New Instruments
\$10,000

Koorie Heritage Trust Inc
www.koorieheritagetrust.com
Koorie Arts Heritage Collaborative Project
\$80,750

Melbourne Recital Centre
www.melbournerecital.org.au
Principal Soloist's Room
\$100,000

Mietta Foundation Inc
www.miettas.com.au/foundation/index.html
Mietta Song Recital Award
\$5,000

Orchestra Victoria
www.orchestravictoria.com.au
Orchestra Victoria Regional Program 2008/09
\$25,000

Platform Youth Theatre
www.pyt.org.au
The Four Horsepersons of the Apocalypse: WAR
\$5,000

Soul Theatre Inc
Chrysalis
\$20,000

Student Youth Network Inc (SYN)
www.syn.org.au
'SYNplayerOnline' Development Project
\$10,000

The Old Van Ltd
www.theoldvan.com
The [Aussie Rules] Taming of the Shrew
\$7,500

Community Support

Australian Red Cross Victoria
www.redcross.org.au
Save-a-Mate - For Young People in Victoria's Wimmera
\$150,000

Bethany Community Support Inc
www.bethany.org.au
140th Building Anniversary Appeal
\$20,000

Crisis Support Services Inc
www.crisissupport.org.au
Redevelopment and implementation of the Victorian
Suicide Helpline Caller Information Database
\$20,000

Haemophilia Foundation Australia
www.hfv.org.au
Family Camp Victoria
\$4,400

Hotham Mission Asylum Seeker Project
www.hothammission.org.au
Asylum Seeker Basic Living Assistance/Poverty Re-
lief Program
\$20,000

Lifeline Gippsland Inc
www.lifeline.org.au/gippsland
Equipping the Face to Face Counselling Areas at the
Lifeline Community Centre
\$25,000

SecondBite
www.secondbite.org
Food Collections Expansion Project 2008/09
\$20,000

Self Help Adiction Resource Centre
www.sharc.org.au
Peer Helper
\$15,000

St John Ambulance Australia (Victoria) Inc
www.stjohnvic.com.au
Ambulance Upgrade
\$119,180

The Mission to Seafarers Victoria Inc
www.missiontoseafarers.com.au
Seafarers Centre - Facility Upgrade
\$15,000

University Of Melbourne
www.unimelb.edu.au
Community Indicators Victoria
\$100,000

Action for Community Living
www.advocacyhouse.org/acl/about.html
Implementation of Final Report Findings arising from
Disability Employment in the Disability Services Sec-
tor in Victoria Research Project
\$11,552
**amendment to existing grant*

Disability Care & Support

Bayley House
www.bayleyhouse.org.au
Healing Hands
\$15,000

Impact Leisure Association Inc
www.impact.vic.edu.au
Homes in Communities
\$20,000

Marillac House Limited
www.marillac.com.au
Project Worker to Implement Development Recom-
mendations of HMST - Funded Study
\$75,000

Motor Neurone Disease Association Of Victoria Inc
www.mnd.asn.au
Equipment Services Development
\$30,000

mpower inc
www.mpower.org.au
Early Intervention Pathway Project
\$12,540

Uniting Church in Australia
www.victas.uca.org.au
Merricks Lodge Disability Access Upgrade
\$20,000

Yooralla Society Of Victoria
www.yooralla.com.au
Mother Goose - Tarlina
\$11,800

Education

Aboriginal Literacy Foundation
www.aboriginalliteracyfoundation.org
Literacy Tutoring for Indigenous Young People in Geelong
\$20,000

Emergency Accommodation and Support Enterprises (EASE)
www.solvingthejigsaw.org.au
Solving the Jigsaw 'Kids Business' Documentary
\$26,700

Employment & Vocational Training

Bright Adult Education
www.brightadulteducation.org.au
Volunteer and Community Group Printing Support Project
\$4,656

Swinburne University of Technology
www.swin.edu.au
Head Start: Connecting Disengaged Young People into Meaningful Education, Training and Employment
\$23,961

Environment

Friends of the Earth Melbourne
www.foe.org.au
Yorta Yorta Informed Consent for National Parks on Country
\$40,000

Health

La Trobe University
www.latrobe.edu.au
Prospective Identification of Autism in Infancy: A Follow-up Study
\$99,062

Monash University
www.monash.edu.au
A Novel Approach to Understanding Drug Action in Alzheimer's Disease
\$48,000

Monash University
www.monash.edu.au
Evaluation of Protein Antagonists as Candidate Therapeutics for Treatment of Rheumatoid Arthritis
\$8,563

The Mental Health Research Institute of Victoria
www.mhri.edu.au
Building Control Resources with the Victorian Brain Bank Network
\$74,000

University Of Melbourne
www.unimelb.edu.au
Extending Communication for Patients with Post-Coma Unresponsiveness
\$47,200

About Us

Helen Macpherson Smith Trust

Level 43
80 Collins Street
Melbourne Vic 3000

Tel: 03 9631 2551

Trustees

Darvell M. Hutchinson AM, Chairman
Frances H. Awcock AM
Keith B. Smith

Staff

Tony Baird, Investments Executive
Darren McConnell, Finance Executive
Chris Wootton, Grants Executive
Sarah Bartak, Grants Administrator
Pamela Beech, Office Administrator