



*HMS*

ANNUAL REPORT 2006

HELEN MACPHERSON SMITH TRUST

# Contents

- 1 Introduction
- 2 Trustee's Report
- 4 Grants Overview
- 5 Grant Program Areas for 2005-06
- 27 Investments and Grants
- 28 Financial Summary
- 30 An Historical Insight

Helen Macpherson Smith Trust is an independent perpetual philanthropic trust established in 1951 by Helen Macpherson Schutt (née Smith) for the benefit of Victorian charitable institutions.

We give grants to a wide variety of eligible charities and a diverse range of projects that seek to benefit the people of Victoria.

Grants fall in eight program areas: aged care; arts, culture and heritage; community support; disability care and support; education; employment and vocational training; environment; and health.

## Trustees

Darvell M Hutchinson AM, Chairman  
J Barry Hutchins OAM (retired 15 February 2007)  
Keith B Smith (appointed 15 February 2007)

## Staff

Anthony H B Baird, Investments Executive  
Darren J McConnell, Finance Executive  
Elizabeth M Gillies, Grants Executive  
Sarah C Bartak, Grants Administrator  
Pamela J Beech, Office Administrator

## Investment Committee

Darvell M Hutchinson AM, Chairman  
J Barry Hutchins, OAM  
J Gordon M Moffatt AM  
John A Bryson  
Anthony H B Baird  
Darren J McConnell

## Bankers

National Australia Bank

## Legal Advisors

Freehills

## Auditors

PKF

## Graphic Designers

MDM Design Associates

## Contact Information

The office of the Helen Macpherson Smith Trust is located at:

Level 43, 80 Collins Street  
Melbourne Victoria 3000 Australia

Telephone (+61 3) 9631 2551  
Facsimile (+61 3) 9631 2530

Email [info@hmstrust.org.au](mailto:info@hmstrust.org.au)  
Website [www.hmstrust.org.au](http://www.hmstrust.org.au)

Guidelines for grant applications are available on our website.

The HMS initials and the floral pattern used throughout this report are engravings that appear on some of Helen's personal effects.

# Introduction

The life of Helen Schutt was not one that made headlines. She lived comfortably and quietly, first in Melbourne, then in Europe, secure in the financial and social legacy of her family.

Helen was particularly fortunate in her forebears: on both sides they were hard working and energetic Scottish immigrants. On the Macpherson side they were good judges of land and excellent farmers while the Smiths were entrepreneurs with a talent in business, particularly as timber merchants. Helen was born Helen Macpherson Smith in Scotland in 1874 to her Scottish father, Robert Smith and her Australian mother of Scottish descent, Jane Priscilla Macpherson.

Helen attended school in Scotland, Europe and Australia.

In 1901, aged 27, Helen married William John Schutt. He was 33 years old, a barrister, raconteur, Essendon footballer and later to become a Justice of the Victorian Supreme Court. Of the 22 years of their married life in Melbourne, little is known. They had no children and Helen's name rarely appeared in the social pages of newspapers or magazines.

It is through the reporting of William's life, especially after his retirement from the bench, that we learn something of Helen's life in Europe, where she lived from early in 1924 until her death in 1951.

In Europe, Helen travelled widely, living mainly in both Switzerland and the south of France. She and William made extensive trips together in Europe, their activities widely reported in the press.

William Schutt died in 1933, aged 65, after an accident on board ship while returning to Australia from one of his many visits abroad to travel with Helen.

In April 1951, while living at the Hotel Majestic in Cannes on the French Riviera, Helen contracted pneumonia and died.

Helen's story could have ended there but for the fact that on her death she left £275,000 (\$550,000), being the majority of her considerable wealth, to establish a philanthropic trust to benefit Victorian charities.

Despite this generous benefaction, Helen was buried in a pauper's grave in the Saint Pierre cemetery in Marseilles. Later, acting

on instructions from solicitors, her body was exhumed and her remains cremated in accordance with her wishes. Helen's ashes were cast to the winds in the Marseilles cemetery. No tombstone or monument existed in honour of her lasting legacy to society, until the Trustees unveiled a monument beside her parents' graves in the Smith family plot in the Melbourne General Cemetery on St Andrew's Day 2001, to commemorate the 50th Anniversary of the Trust.

The capital value of the Helen Macpherson Smith Trust at 30 June 2006 was \$91 million, and in the year to June 2006 the Trustees approved grants of \$4.65 million to fund a range of Victorian charities across most sectors of community life. The grants made in 2006 are detailed in this Report.

As a perpetual legacy, Helen's Trust will continue indefinitely. Her forebears – both Macphersons and Smiths – were strong, energetic and resourceful. Many family members contributed much to the advancement of Australian colonial life. It is fitting that the financial legacy of Helen and her family continues to leave a lasting mark on Australia and its people.

**The capital of the Helen Macpherson Smith Trust was valued at 30 June 2006 at \$91 million. Grants totalling \$4.65 million were approved in the year bringing aggregate grants to \$60 million since the Trust was established.**

# Trustees' Report

For The Year Ended 30 June 2006



*Darvell M Hutchinson AM,  
Chairman of Trustees*



*J Barry Hutchins OAM,  
Trustee*

The 2006 financial year has again been another year of achievement for the Trust. The corpus achieved further growth of \$13 million, aided by the continuing strength of the stock market. A strong level of grant-giving was maintained for the year, even though the operating surplus was lower than last year's record, due to smaller dividends components being received from buy-back offers.

## Investments

The Trustees are pleased to report that in the year to June 2006, the investment portfolio grew by 16.32 per cent to \$91 million. During the year we accepted several off-market buy-back opportunities (Westpac, St George and BHP), due to their attractiveness in achieving high levels of income for granting. However, without participation in the buybacks, the portfolio would have grown ahead of the ASX 200 and All Ordinaries indices over the same period.

With very few exceptions we continue to invest in stocks with potential for both capital growth and attractive yields, inclusive of imputed franking credits. We also maintained over 30 per cent of our portfolio in banking stocks during the year, and this strategy was again vindicated.

With the ongoing upward market trend during the year, and our desire to hold our stock positions, our opportunities to generate premiums from the sale of Call Options were limited.

## Investment income

Operating Income excluding dividends from buy-backs and premiums on call options amounted to \$7.15 million which represented a yield of almost 8.0 per cent on the market value of investments at year end, despite the reduced incidence of revenue from off-market buy-backs. Our good income yields continue to maintain our opportunities for grant-making as evidenced in the following sections of this report.

We are confident that our strong and diverse industry-sector portfolio will continue to provide sound levels of income for distribution in the years ahead.

## Grants

During the year the Trustees approved grants to 155 eligible charities. These grants totalled \$4,649,069 for the year, all of which are detailed in this report, together with a Grants Overview. Our aggregate grants to date passed \$59.5 million during the year.

## Administration and staff

The Trustees have been ably supported throughout the year by our growing team of dedicated staff.

Finance Executive Darren McConnell commenced early in the financial year and has worked hard to streamline the reporting systems of the Trust. In addition to his accounting and finance role, Darren has assumed office management duties including the upgrade of our computer and telephone systems.

Grants Executive Liz Gillies continued the Trust's engagement with creative philanthropy, resulting in our increasing involvement in a range of collaborative funding partnerships, whilst making sure we didn't lose sight of the need of our traditional grant applicants. Her work is outlined in greater detail in the Grants Overview.

Office Administrator Pamela Beech continued to provide excellent secretarial assistance to the Trustees and the Executive team.

In April, Sarah Bartak joined us in the newly created position of Grants Administrator to support our Grants Executive, Liz Gillies. As well as assisting with the administration of our grants, Sarah has taken on responsibility for the Trust's website and publications including a new Grants Bulletin which is now published online following each grant round.

In May, the Trustees resolved to appoint an Investments Executive, Anthony (Tony) Baird, to take the prime coordinating role for the overview of the investment portfolio and ongoing investment strategies. Tony started in July 2006.

The Trustees express their appreciation to our staff for their dedicated commitment to the Trust.

## Outlook

Our major objective remains to build upon the sound foundation now achieved by the Trust.





*Tony Baird,  
Investments Executive*



*Darren McConnell,  
Finance Executive*



*Liz Gillies,  
Grants Executive*



*Sarah Bartak,  
Grants Administrator*



*Pamela Beech,  
Office Administrator*

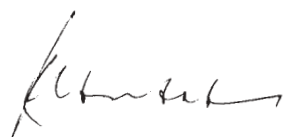
After three years of strong stock markets, we do not expect another year of near 20 per cent capital growth. However, we are looking for the dividend income from our investment portfolios to continue to grow, in order to maintain our diverse programs for grant-giving.

We remain committed to the local share market, and franked income in particular, and are confident that the Trust's exposure to Australian equities will yield good rewards to our charitable beneficiaries.

**We are confident that our strong and diverse industry-sector portfolio will continue to provide sound levels of income for distribution in the years ahead.**



*Darvell M Hutchinson AM  
Chairman of Trustees*



*J Barry Hutchins OAM  
Trustee*

## Grants Overview

This year, the Trust received applications from a diverse range of charitable bodies involving almost all sectors of community life in Victoria. Our strategic and proactive approach to grant-making, developed over the last three years, resulted in the support of a number of highly innovative projects as well as favourable responses to many other worthy requests.

The Trust remains committed to receiving a significant number of applications, and actively works to encourage a greater number and diversity of grant applications. Grants Executive Liz Gillies has continued to foster opportunities for partnership-based models. These include partnerships between charitable organisations seeking to achieve

common outcomes across their sectors where they may accomplish more collectively than individually, or between our Trust and other funding bodies for collaborative grant-making. We also continue our commitment to initiate pro-active grants in conjunction with organisations and communities with the aim of developing high-level strategic projects that focus on systemic change involving multiple partnerships.

The Helen Macpherson Smith Trust's current aims for grant-making are best explained on the basis of a Manage-Engage-Collaborate model of grant-making. Historically, we managed the process of grant-making, that is, we responded to the applications

received. Over time we increasingly sought to engage with those seeking our support. This enhanced our understanding of the issues and allowed the Trust to have a more strategic grant-making focus. The third stage of our development is to foster a collaborative model of grant-making. This places a greater requirement on developing the Trust's insight and understanding of the issues, the sectors which are involved in any potential collaboration, the evidence base that either does or should exist, and most importantly, the gap or opportunity that needs to be articulated, defined and scoped which will ultimately contribute to systemic change and better outcomes across the community.

## Summary of Grants

Program area	2006 \$	2005 \$
Aged Care	180,395	516,625
Arts, Culture and Heritage	741,393	529,790
Community Support	933,570	1,323,557
Disability Care and Support	833,087	521,098
Education	248,000	100,000
Employment and Vocational Training	480,000	60,000
Environment	239,388	50,000
Health	1,226,593	1,417,895
<b>Total grants approved 2005-06</b>	<b>\$4,882,426</b>	<b>4,518,965</b>
Less grants cancelled from this financial year and previous financial years	(233,357)	
<b>Total grants in financial statements of this Annual Report</b>	<b>4,649,069</b>	<b>(4,321,465)</b>

# Grant Program Areas For 2005-06

## Aged Care

Organisation name	Project title	Grant amount
Aged & Community Care Victoria	Influence Strategy for Victorian Community Care Report	\$5,000
Broadmeadows Uniting Care	Pride or Prejudice – the hidden incidence of fuel poverty among older women in our communities	\$20,000
Council on the Ageing (Victoria) Inc	Women's Financial Literacy Seminar Program	\$20,000
Eva Tilley Memorial Home Inc	Redevelopment of facilities to meet new building requirements	\$20,000
Hesse Rural Health Service	Building a 10 bed Dementia Specific Unit	\$20,000
Housing for the Aged Action Group Inc	Relocation assistance for aged people forced to move house for financial reasons, changed family circumstances or homelessness	\$5,000
Lyrebird Villages for the Aged Inc	Redevelopment of existing building to meet building certification for 2008	\$25,000
Moyne Health Services	Moyneyana House Extension – 17 bed extension to meet growing demand for residential care and accommodation	\$25,000
Nathalia District Hospital	Purchase of a screen magnification computer to improve reading for vision impaired residents of the aged care facility	\$5,395
Sandringham Aged Care Association Inc	Construction of a disabled ramp and covered walkway	\$20,000
Western District Health Service	Upgrade of aged care services at Penhurst & District Health Service	\$15,000
<b>Total grants</b>		<b>\$180,395</b>

# Grant Program Areas For 2005-06

continued

## Broadmeadows Uniting Care

(Total Grant of \$20,000)

Broadmeadows Uniting Care has provided financial counselling services to vulnerable and disadvantaged consumers for over 32 years. Originally established in the late 1970s as a budget advice service for low income households, the Broadmeadows financial counselling service has contributed to the development of government-funded financial counselling, consumer credit information, casework and advocacy services. The service assists an average of 1,500 low-income residents within the northern suburbs of Melbourne each year.

### **Pride or prejudice – the hidden incidence of fuel poverty among older women in our communities**

'Pride or prejudice' is the working title of a research project investigating the hidden incidence of disconnection of essential domestic gas and electricity services amongst single householders, in particular older women.

The research involves a series of interviews with women over the age of 55 who have had difficulties negotiating affordable gas and electricity payment arrangements, who have been disconnected or those who have 'self-disconnected' from their services. Interview findings are documented along with a series of recommendations addressing the 'experience' of fuel poverty. The project aims to inform financial counselling service providers, community health, welfare and emergency relief agencies, energy retailers, aged care providers and government policy makers about the circumstances and information needs of vulnerable consumers – in particular older women.

### **Energy poverty**

Since the deregulation of domestic gas and electricity supply in 2001, Broadmeadows Uniting Care Financial Counselling Services have been concerned and actively involved in monitoring the adverse impact of the privatisation of retail gas and electricity services on disadvantaged and vulnerable consumers. Case studies collated by the service since 2003 indicated an increase in disconnections and this was consistent with the findings of the Energy and Water Ombudsman. As a result, the Victorian Government introduced legislation in late 2005 to protect people who were genuinely experiencing financial hardship from having services disconnected. The frequency of disconnections, however, prompted concern among financial counselling staff about the situation of vulnerable consumers who may be subject to long periods of disconnection from essential gas and electricity services, or self-disconnecting from services because of financial hardship, and in particular, people who would not ordinarily seek assistance or intervention from health or welfare services. Existing casework data collated by financial counsellors indicates that older people, in particular older women (age 55 and over) under-utilise community welfare and material aid services in relation to gas and electricity disconnection.

The research is being conducted within the local government area of Hume in the northern suburbs of Melbourne, which consists of a diverse community made up of older established public housing estates and new housing developments.

Financial counselling casework revealed that low-income older people and women in particular are at risk of:

- having essential gas and electricity services disconnected because of financial hardship;
- self disconnection of services because of financial inability to pay bills;
- going without heating, cooling and cooking in order to economise on consumption costs;
- going without basic food, medication and transport in order to pay retail energy bills and avoid disconnection;
- anecdotal evidence indicates that older people particularly women are reluctant to attend welfare and material aid services for assistance because; they do not wish to disclose the personal financial and/or social circumstances; fear of loss of independence; lack of knowledge assistance available; belief that welfare and material aid services are provided for more deserving cases.

A full report documenting the research process and outcomes will be published next financial year.





## Arts, Culture and Heritage

Organisation name	Project title	Grant amount
Australian National Memorial Theatre (National Theatre, St Kilda)	Support for the Community Access Program (total commitment \$15,000 paid over three years)	\$5,000
Australian Print Workshop	Contribution towards purchase of Fitzroy premises	\$100,000
Bendigo Art Gallery	Exhibition of 'Babylonia'	\$20,000
Bendigo Tramways	Bendigo's Tramways – past, present and future project	\$5,000
Geelong Art Gallery Inc	Contribution towards purchase of Eugene von Guerard's 'View of Geelong'	\$75,000
Gertrude Street Contemporary Art Spaces	Mentorship program for young visual arts writers, in partnership with Express Media	\$8,000
HotHouse Theatre	Production of 'Embers', a play developed in wake of 2003 bushfires in partnership with Upper Hume Community Health	\$25,000
Jewish Museum of Australia	Rebuilding Project – 'Building for our Future'	\$50,000
Malthouse Theatre	Tower Theatre Program (total commitment of \$175,000 paid over three years)	\$75,000
Monash University – Medical Foundation	Development of principals and standards of practice for fundraisers	\$25,000
Multicultural Arts Victoria	Production of 'The Diary of Anne Frank'	\$10,000
Orchestra Victoria	Evaluation and ongoing support for the Regional Program	\$65,000
Royal Historical Society Of Victoria Inc	Conservation and storage of six volumes of Victorian pamphlets	\$4,920
Saint John's Toorak	St John's Anglican Church Restoration Appeal – National Trust	\$50,000
Shrine Of Remembrance	'Spirit of Anzac' video for junior school students	\$20,000
State Library Of Victoria Foundation	Proposal to digitise significant regional newspapers (total commitment of \$150,000 paid over three years)	\$50,000
St Paul's Cathedral	Restoration and renewal of the Cathedral (total commitment of \$305,000 paid over three years)	\$100,000
Swinburne University of Technology	Project: Preservation of the original 'Heritage' railway drawings for Puffing Billy	\$15,000
Triple R Broadcasters Ltd	Support for the development of a live performance space	\$20,000
Victorian Jazz Archive Inc	Purchase of a digital copier	\$4,623
Westside Circus	Planting of the Red Tree production – collaborative youth project	\$5,000
Young Voices of Melbourne	Darwin to Alice Springs Tour – assistance for disadvantaged families	\$8,850
<b>Total grants</b>		<b>\$741,393</b>

## Grant Program Areas For 2005-06

continued

### Malthouse Theatre

(Total Grant of \$175,000)

Malthouse Theatre is a company dedicated to the development, production, and promotion of contemporary Australian theatre. Its task in theatre is to engage broadly and investigate profoundly what it is to be alive, to be human, to be Australian, and to be a citizen of the world.

#### The Tower Theatre Program

In February 2006 the Tower Theatre three-year program was officially launched thanks to funding from a \$175,000 grant from the Helen Macpherson Smith Trust and augmented by funding of \$25,000 from the Myer Foundation.

This partnership has enabled Malthouse Theatre to produce artistic works at the Tower Theatre as well as establish a Regional Connections Program for the wider regional community. This support strengthens Malthouse Theatre's commitment to and connection with artists and the independent theatre scene, locally, regionally and internationally.

The Tower Theatre Program is an exciting development for the Malthouse Theatre, opening up the relationship with Melbourne's independent theatre scene. In an article in *The Age*, Artistic Director Michael Kantor said, "As a space for rehearsals, readings, and performance, it is a vital entry point for emerging directors, designers and actors to be able to make that transition into a larger theatre infrastructure."

Additionally, the Regional Connections Program is an extension of this relationship. The program will broaden opportunities for and foster connections with artists in regional Victoria. This project will offer professional development opportunities, networking, artistic collaboration and, a local and national industry perspective.

Malthouse Theatre is delighted to be involved in this three-year partnership with the Helen Macpherson Smith Trust. As a result of this partnership, Malthouse Theatre announced a full season of six productions in the Tower

Theatre in 2006. The audience interest shown so far in these productions has illustrated the value of re-mounting work

in an established space, offering greater exposure and infrastructure to support the work.



*A Quarrelling Pair.*



## Australian Print Workshop

(Total Grant \$100,000)

Australian Print Workshop (APW) has been the leading non-profit print workshop in Australia operating from its leased premises in Gertrude Street, Fitzroy. Since its establishment in 1981, APW has produced many thousands of prints, by many hundreds of artists: on stone, wood, lino and metal plates. APW works with Australia's leading artists to produce limited edition prints that have been exhibited and collected around the world. It also provides important early career support for emerging artists, some of whom are assisted by scholarships to gain access to the professional printmaking facilities and expertise of APW. An equally important aspect of the work of APW is its use by various community groups, who are assisted to gain skills in the print medium. APW is a highly successful arts organisation, with a respected track record in the areas of fine art printmaking, education, public gallery programs and exhibitions, community access and outreach projects.



*Martin King and Warren Cooke printing Cherrie Hood lithograph.*

### Purchase of premises

In 2005, APW's future looked uncertain. APW's landlord had died, leaving the workshop's Fitzroy premises to his family who decided the property had to be sold. The APW's long term lease was also about to expire and renewal looked highly unlikely. After exploring many and various alternatives, APW determined the best option was to try to secure the Fitzroy building that had been its home for 15 years. APW's research confirmed there was no suitable rental property available and costs associated with moving and re-establishing the print workshop were prohibitive. The future of APW was therefore at great risk.

After discussions with the landlord's family, APW was offered first option to purchase the building. APW decided to pursue this one-off opportunity to secure the best base for its long term operational and economic path.

APW determined that ownership of the Fitzroy building would give APW both continuity and permanence and allows it to build on its impressive and successful 25-year history. In the short space of just over six months, with the initial support and encouragement of the Helen Macpherson Smith Trust, APW successfully raised the funds needed to purchase the building in a collaborative partnership that bought together a unique arts organisation and its philanthropic benefactors. APW is now the owner of its Fitzroy building – debt free. With the purchase of a permanent home, APW's future is now secure as a premier print workshop.

*"On 26 October 2006, as I turned the key in the lock and opened the door to Australian Print Workshop I knew that the future of the workshop was secured. It was a very special moment. An amazing feeling knowing that APW was now the owner of its Fitzroy*

*building and that in the short space of just over six months we had accomplished what many had said would be impossible.*

*The Helen Macpherson Smith Trust's generosity in awarding APW a major grant provided APW with much more than just financial aid. It provided vital early support and guidance for our capital campaign, giving APW the confidence to embark on the daunting task of raising the funds required to purchase a building...*

*The Helen Macpherson Smith Trust's support of APW showed us that it is possible to succeed. To be able to realise a dream; even when it seems that it's impossible.*

*Together we have been able to secure the future of APW and contemporary Australian Printmaking."*

*Anne Virgo  
Director, Australian Print Workshop*

# Grant Program Areas For 2005-06

continued

## Community Support

Organisation name	Project title	Grant amount
Birchip Cropping Group Inc	BCG Community Gardens	\$25,000
The Bridge Foundation Inc	Bags for Release Program – helps with prisoners prior to release to increase community reintegration options	\$5,000
Camcare	History of Camcare which provides counselling and community support in City of Boroondara	\$1,000
Centacare – Catholic Family Services	A Fairer West – feasibility study: partnership of networks, focused on social policy issues in the Western region of Melbourne	\$20,000
Child & Family Services Ballarat Inc	Family Violence in the News Project: aimed at promoting an informed understanding of family violence in the community through accurate and informed coverage of the issue within the media	\$28,590
Creative Ministries Network	Koorie Artist-in-Residence to provide role model for Aboriginal women in drug and alcohol recovery program art classes	\$6,700
Crisis Support Services Inc	Equipment for the new counsellor training room	\$5,000
Doncare Community Services	‘Dimensions’ Family Violence Project: to research patterns of occurrence of family violence in the City of Manningham and to make recommendations to services in the area	\$10,000
Dunmunkle Health Service	Contribution towards construction of disabled toilet in Rupanyup Memorial Hall	\$4,000
Eastern Health Care Network Yarra Ranges Health Service	Healesville Indigenous Community Centre feasibility study and community plan	\$20,000
Federation of Community Legal Centres (Vic)	Family Violence Court Support Best Practice Project	\$21,000
Hotham Mission – Asylum Seeker Project	Asylum Seeker Living Assistance Program	\$10,000
Kildonan Child And Family Services	Coburg Cooking Garden Kitchen Renovation Project	\$10,000
La Trobe University	Evaluation of the Children’s Koori Court of Victoria	\$50,000
MADEC (Mildura & District Educational Council)	‘The Art of Volunteering’ Exhibition – Souvenir Book	\$3,000
Melbourne Cares	Two collaborative projects by consortium of not-for-profits which involve connecting potential volunteers with not-for-profit organisations in Victoria	\$50,000
Melbourne City Mission	Facilitator – Agora (total commitment \$40,000 paid over two years)	\$20,000
Murdoch Children’s Research Institute	Building Community Capacity to link Murdoch Institute research to the needs of young children and families in local communities (total commitment \$165,000 paid over three years)	\$55,000
Murrindindi Family Resource Program Inc	Employment of Community Liaison Person	\$7,080
Public Interest Law Clearing House (PILCH)	Operation and evaluation of the Human Rights Law Resource Centre	\$35,000
Port Phillip Community Group Ltd	Cooking and Gardening Group for local residents	\$2,500
SIDS & Kids Victoria	Personal Enrichment Workshop and Parent Supporter Training Program	\$5,000
St Kilda Gatehouse Inc	Assessment of ongoing sustainability and development of strategic plan	\$15,000
St Luke’s Anglicare	Visioning Children’s Futures: seeding grant to develop a proposal to review substitute care and the context within which it is used	\$10,000
St Luke’s Anglicare	Youth Assets Australia (total commitment \$30,000 paid over two years)	\$15,000





Organisation name	Project title	Grant amount
Uniting Care – Cutting Edge	Upgrade of kitchen facilities at Wesley Property	\$17,700
Victoria University	Building Human Rights into our Community (paid over two years)	\$110,000
Victorian Alcohol & Drug Association	Regional Voices Project: Achieving systems change through strong rural and regional voices	\$20,000
Victorian Arabic Social Services	‘SOAR’ at Lyndale Secondary College: identifying and addressing issues of racism	\$40,000
Victorian Association for the Care and Resettlement of Prisoners	Research Project: Children: Unintended Victims of Legal Process	\$25,000
Victorian Council of Social Services	Advocacy project for low-income and disadvantaged Victorians re. utilities	\$50,000
Victorian Court Information & Welfare Network Inc	Facilitating the availability of court network support in Regional Victoria (total commitment of \$145,500 paid over two years)	\$117,000
Victorian Women's Housing Association	Undertake a feasibility study to investigate the forming of a partnership to register as an affordable housing association	\$35,000
Visionary Images	A-LURE Project – youth pilot project involving design, creation and implementation of a locative media game	\$10,000
Whitelion Inc	Agora Project: Crime Prevention Working Group	\$40,000
Women's Health West	Purchase of window coverings and carpet at the Crisis Accommodation Centre	\$10,000
Youth Affairs Council of Victoria Inc	Funding of a youth gathering project for the Victorian Indigenous Youth Advisory Council	\$25,000
<b>Total grants</b>		<b>\$933,570</b>

## Public Interest Law Clearing House (PILCH)

(Total Grant of \$35,000)

The Public Interest Law Clearing House (PILCH) is an independent not-for-profit legal referral service. It seeks to meet the legal needs of community groups, not-for-profit organisations and individuals from disadvantaged or marginalised backgrounds. PILCH acts as a facilitator for the community to access pro bono legal assistance from the private legal profession.

### Operation and Evaluation of the Human Rights Law Resource Centre

With its incorporation in January 2006, the Human Rights Law Resource Centre ('Centre') became Victoria's, and Australia's, first specialist human rights legal service. The Centre is an independent community legal centre which seeks to promote and protect human rights in Australia, particularly

the human rights of people who are disadvantaged or living in poverty, through the practice of law. In particular, the Centre aims to contribute to the harmonisation of law, policy and practice in Australia with international human rights norms and standards. The Centre undertakes a range of activities to achieve this aim, including conducting and supporting litigation, education, training, research and advocacy regarding human rights.

In addition to being the first specialist human rights legal service in Australia, the Centre is also the first organisation to pilot an innovative service delivery model to promote human rights. The model draws together and coordinates the capacity and resources of pro bono lawyers and legal professional

associations, the human rights law expertise of university law schools, and the grass root connections and community development focus of community legal centres and human rights organisations.

The Helen Macpherson Smith Trust is a founding supporter of the Centre. As well as contributing funds to the Centre's operations, the Trust is also supporting a comprehensive independent evaluation of the Centre. The evaluation team will investigate and make recommendations regarding the efficiency, effectiveness, sustainability, impacts and outcome of the Centre. This evaluation will contribute significantly to the identification and enhancement of organisational and sectoral capacity to promote human rights through the practice of law.



# Grant Program Areas For 2005-06

continued

## Youth Affairs Council of Victoria

(Total Grant of \$25,000)

The Youth Affairs Council of Victoria Inc (YACVic) is the peak body and leading policy advocate on young people's issues in Victoria, Australia. It is an independent, non-government organisation. Its vision is for a Victorian community that values and provides opportunity, participation, justice and equity for all young people.

### Providing a voice for Indigenous youth

Under the auspices of the Youth Affairs Council of Victoria, the Victorian Indigenous Youth Advisory Council (VIYAC) is a state-wide network of volunteer young people between the ages of 12-25 years, who meet regularly to work on issues of concern to them, and to be a vocal advocate for Indigenous youth to Government and community. VIYAC is an initiative that is funded by Aboriginal Affairs Victoria and supported by the Office for Youth.

Key program objectives of VIYAC are: to be a voice for Indigenous youth; to be heard by the Government; to provide a mechanism to voice youth concerns to older people; to bring Indigenous youth and the broader community together; to promote a sense of pride in being young and Indigenous; and to make Indigenous youth aware of the opportunities that are available to them.

VIYAC allows youth to speak up about any issues that affect young Indigenous people in Victoria. The Council is also an important vehicle to facilitate youth access to both government and non-government organisations and the broader community. Members of VIYAC are a point of contact for the State Coordinator and attend VIYAC meetings, consultations and community events. They also have a strong passion and drive to be a voice for Indigenous youth in their communities and the whole of Victoria; in turn VIYAC aims to provide all of its representatives with the skills needed to become strong future leaders.

VIYAC received a grant from the Helen Macpherson Smith Trust to run an Indigenous Youth Gathering. The key objectives of the Gathering were:



*Rebecca Phillips, VIYAC member, getting her face painted.*



*Participants at the Yan Yean Gathering.*



*VIYAC members at the Yan Yean Gathering. Back row: Brent Harrison, Jade Colgan (Coordinator), Dixon Pattern, Whitney Solomon and Ursula Smith. Front row: Simone Andy, Rebecca Phillips, Megan Laxton, Nikayla Bamblett and Keira Martin.*

- to equip VIYAC members with project planning and implementation skills;
- to provide an opportunity for Indigenous young people to come together to discuss issues of importance to them;
- to expose young Indigenous people to positive role models and mentors within their communities;
- to raise Indigenous youth issues to the broader community; and
- to work from a youth participation and empowerment framework.

VIYAC members decided on an event to showcase the talents of the Indigenous youth here in Victoria and promote all of the opportunities that are available to them. Called the 'Yan Yean Gathering' (yan yean meaning 'youthful' in Woirurung), the day-long event was planned to include traditional and modern dancers; art exhibitions; a smoking ceremony; a job, services and education market; face painting; and traditional sports.

## Victorian Council of Social Services (VCOSS)

(Total Grant of \$50,000)

The Victorian Council of Social Service (VCOSS), established in 1946, is the peak independent coordinating body of the social and community services sector. It works to raise awareness of the existence, causes and effects of poverty and inequality, and advocate for the development of a sustainable, fair and equitable society. As well as promoting the wellbeing of those experiencing disadvantage, and contributing to initiatives seeking to create a more just society, it also provides a strong, non-partisan voice for the community sector.

### Utilities Project – advocating for low-income and disadvantaged Victorians

Late in 2005, joint funding from the Helen Macpherson Smith Trust and the Department of Infrastructure (DoI) enabled VCOSS to employ a Utilities Project Officer. The joint funding enabled VCOSS to turn this from a part-time position into a full-time equivalent policy unit with a policy worker, administrative and project support, and a consultation and publications budget.

The overall aim of the Utilities project is to ensure that, when it comes to energy and water policy and provision, the interests of low-income and disadvantaged

Victorians are looked after and supported. While the DoI funding was sufficient to ensure engagement with energy policy decisions and the energy industry, the Trust's grant has enabled VCOSS to cast a wider net, encompassing engagement with the developing national energy market; advocating on water policy matters; supporting community and welfare organisations who directly assist people in utilities-related hardship; and collaborating with environmental organisations to advocate on efficiency issues. Additionally, by resourcing a second worker with a dual role of administrative support and discrete project work, the capacity of the entire project has been greatly enhanced.

The Trust's grant ensured significant work by VCOSS into the following:

- extensive community involvement in the development process of the Sustainable Water Strategy;
- ensuring Victorian consumer protections in the National Energy Market were retained;
- training and resources for people working with households in utilities hardship; and
- research into how households managed competing expenditures.



*Jackie Anders and Dean Lombard developing the content of 'advocacy kits' to help emergency relief workers protect the rights of households in hardship to essential services.*

# Grant Program Areas For 2005-06

continued

## Macpherson Smith Community Alliance

The Macpherson Smith Community Alliance, launched on 12 May 2004, is a joint initiative between the Victorian State Government and the Helen Macpherson Smith Trust. The Alliance established a \$1 million fund in the financial year 2004 on the basis of a matched grant of \$500,000 each from the Trust and from Regional Development Victoria.

The fund supports projects identified by the Community Capacity Building Initiative (CCBI), a joint initiative launched in May 2000 between Regional Development Victoria and the Department of Victorian Communities and supported by the Victorian Farmers Federation.

Sixty different communities originally tendered to take part in this initiative and 11 groups were ultimately selected, involving more than 55 small towns in regional Victoria. The CCBI aims to build people capacity in local key people and to empower them to build relationships between existing organisations and people in the community, develop the community, enhance the local economy, and involve outside organisations where there were skill gaps.

The CCBI program is founded on the important understanding that local people play a critical role in building the capacity of their communities, through their motivation,

vision, energy and commitment. The work of the CCBI project groups enabled the identification and development of a wide range of community projects. The aim of the \$1 million fund is to assist the participating rural Victorian communities to bring these projects to fruition.

In October 2004, the first grants round was held and grants of \$478,481 were made, as referred to in our 2004 Annual Report. The second and final grants round was held in November 2005 and the following allocations made, bring the total grants distributed for this project to \$1,033,032 as a result of interest earned over the project lifespan:

Organisation name	Project title	Grant amount
East Gippsland Shire Council	Bruthen Hall Electrical Upgrade and Acoustics	\$29,323
East Gippsland Shire Council	Cultural Events and Community Assets Project – purchase of a portable stage and silk banners for events	\$13,840
Mildura Rural City Shire Council	Murrayville Cemetery Beautification	\$25,000
Mildura Rural City Shire Council	2006 Ouyen Farmers' Festival	\$2,000
Mildura Rural City Shire Council	Re-seating the Roxy Theatre	\$40,000
Moira Shire Council	Uncle Bob's Park Community Facilities	\$15,000
Moira Shire Council	Nathalia's Northern Entry Enhancement Project – landscaping and road safety improvements for traffic and pedestrians	\$20,000
Moira Shire Council	Community Centre Playground	\$20,000
Moorabool Shire Council	Extension of the Community and Technology Project	\$12,200
Moorabool Shire Council	Youth Theatre and Leadership Project	\$9,890
Moorabool Shire Council	Rural Youth Facilities Strategy	\$17,350
Moorabool Shire Council	Community Group Education Forums	\$15,000
North Grampians Shire Council	St Arnaud Cinema Fitout – Stage 2	\$1,840
North Grampians Shire Council	St Arnaud Community Newsletter	\$3,810
North Grampians Shire Council	Community Surveys and Workshops Project	\$33,900
North Grampians Shire Council	Community Resources Centre Building Development Project	\$32,500
Shire of Strathbogie	Linking Honeysuckle Creek to Town	\$67,898
Southern Grampians Shire Council	Foundations – Restoring the Glenelg River at Balmoral Project	\$36,000
Swan Hill Rural City Shire Council	Riverfront Renewal Program	\$69,600
Swan Hill Rural City Shire Council	Robinvale Euston Young Growers' Network – Learning Program	\$15,500
Towong Shire Council	Development of the Corryong Walking Trail	\$65,000
Yarriambiack Shire Council	Purchase of Commercial Upright Freezer for the community-owned Patchewollock General Store	\$8,900
<b>Total grants</b>		<b>\$554,551</b>



## Disability, Care and Support

Organisation name	Project title	Grant amount
Access Employment	PepperGreen Farm Project – assist in the purchase of equipment	\$6,000
Action for Community Living	Third year of funding for the Leadership Plus program and development of a training module to promote leadership opportunities for people with a disability within disability organisations	\$30,000
Action for Community Living	‘Diversity in Employment in Victoria’ Research Project	\$20,000
Advisory Council for Children with Impaired Hearing	Contribution to a Capital Fund to further develop the organisation's audiology, education and research facilities, resources and advocacy (total commitment of \$250,000 paid over two years)	\$125,000
annecto	Strategic business plan and mapping exercise	\$20,000
Ararat & District Disabled Persons’ Association Inc	Contribution towards purchase of computers and Engrit Electric Home Care Bed.	\$9,430
Brain Foundation Victoria Ltd	Support for People Who Care Program	\$15,000
Brunswick Special Developmental School	Fun ‘n healthy in Moreland! Project which aims to reduce the incidence of overweight and obesity in children. Support for strategic interventions so that the school can participate, alongside the 23 mainstream participating primary schools	\$20,000
Carers Victoria	Further support for the development of the Registered Training Organisation which provides training programs to those working in disability and aged care	\$25,000
Central Bayside Community Health Services	Upgrade of disabled bathroom facilities and kitchen improvement. Provides day programs to adults with an intellectual disability from southern suburbs of Melbourne	\$20,000
Cooinda Terang Inc	Purchase new wheelchairs	\$6,646
Disability Opportunities Victoria	Purchase of a 20-bicycle trailer for the Association's bicycle club	\$5,000
Disability Resources Centre	Public Transport Awareness Watch Project	\$35,000
Down Syndrome Association of Victoria Inc	Empowering young adults with Down syndrome to speak out project	\$5,000
E W Tipping Foundation Inc	Towards construction of a respite house in Bacchus Marsh	\$10,000
Gasworks Arts Park	Art of Difference creative program 2006	\$5,000
Headway Gippsland Inc	Development of a longer term funding strategy	\$15,100
Karkana Support Services Inc	Purchase of a farm tractor for Karkana's market garden	\$35,000
Kids Plus Foundation	Evaluation of the Kids Plus Therapy Program	\$30,000
La Trobe University	Research Project: Making Life Good in the Community	\$13,000
McCallum Community Services Inc – Ballarat	Purchase of ‘Turn a Fork Clamp’ for forklift (grant amended and rolled over into funding for independent living units)	\$12,000
McCallum Community Services Inc – Ballarat	Independent Living Units for people with disabilities	\$38,000
Monash University	Research Project: Lifespan – Investigating the mental health of people with an intellectual disability across the lifespan	\$12,500
mpower inc	‘Hop, Skip and Jump’ Project	\$7,632



# Grant Program Areas For 2005-06

continued

## Disability, Care and Support (continued)

Organisation name	Project title	Grant amount
Northern Support Services	Independent Living Program	\$50,000
Onemda Association Inc	Extend/renovate two sunroom areas	\$10,000
Outlook (Vic) Inc	Outlook – U3A Generational Learning/Mentoring Program	\$30,000
South Eastern Centre Against Sexual Assault	Support for the Sexual Abuse Intellectual Disability Program	\$21,600
St Laurence Community Services (Barwon) Inc	Redevelopment of a disability services facility and purchase of a 'people mover' to support active ageing and community integration	\$50,000
Supported Housing Development Foundation Ltd	AHURI Project: Housing and Location Choices and Preference of People with a Disability (total commitment \$100,000 paid over two years)	\$50,000
Supported Housing Development Foundation Ltd	Extension to the AHURI Project: Housing and Location Choices and Preference of People with a Disability	\$35,000
Travellers' Aid Society of Victoria	Development of Training Plus Kit to empower people with disabilities to travel independently	\$10,000
Variety Club of Victoria Inc	The Sunshine Coach Program for Warringa Park Specialist School	\$10,000
Vermont South Special School	Digital portfolios of each student to tell a picture of their achievements, personality, social interaction with peers and relationship with the environment	\$6,179
Verney Road School	Contribution towards purchase of a bus for the school which provides educational programs to meet the needs of students with mild and/or multiple disabilities.	\$15,000
Villa Maria Society for the Blind	Refurbishment of the Hydrotherapy Centre	\$25,000
<b>Total grants</b>		<b>\$833,087</b>

### Outlook (Vic) Inc (Total Grant \$30,000)

The driving force behind Outlook is its mission 'to inspire fully inclusive communities'. Outlook has distinguished itself through its total commitment to quality outcomes for people with a disability. Outlook has carefully invested significant funding into innovative programs, projects and infrastructure development.

#### Linking seniors with young people with disabilities:

#### Outlook – U3A Generational Learning/Mentoring Program

In an endeavour to create a sustainable environment of reciprocal sharing, learning, and companionship, Outlook (Vic) Inc and the University of the Third Age (U3A) have

teamed up in a groundbreaking project which links older people as mentors to younger people with disabilities.

The concept behind the project was developed based on recognition of the incredible knowledge and skills that are still largely untapped among seniors; the parallels between the needs and barriers faced by people with disabilities and seniors, and the capacity to locally link these two groups. The similarities between the two groups was identified as a strength – an opportunity to bring them together in a reciprocal empathic sharing relationship that had the potential to positively impact on their social, personal and learning outcomes.

The Project will link up to 40 U3A members with 40 people with disabilities, in a reciprocal sharing and learning relationship involving joint participation in training activities. By the end of the project, participants will have undertaken classes in: IT skills (internet, software packages, email etc.); nutrition classes (healthy lifestyles); life skills (budgeting, household management, banking, cooking for one etc.); communication; gardening; tutoring support for clients involved in accredited training courses – linking members with skills that are relevant to the student's area of study (e.g. seniors with horticultural backgrounds would be linked with students participating in the Horticulture Certificate course).



Local students who are undertaking the Victorian Certificate of Applied Learning (alternative to VCE) will also be provided with the opportunity to be linked with U3A members, as a means of providing one-to-one tutoring support; reducing generational barriers; enabling access by young people to the wealth of knowledge and wisdom that comes with age; and enhancing support networks and learning outcomes. This component of the project is currently in the planning phase.

The anticipated Project outcomes for people with disabilities and VCAL students include: access to a wealth of knowledge, skills, and experience from older members of the community; personalised tutoring support (patience is generally a trait associated with ageing, and is crucial in working effectively with people with disabilities); mentoring/ companionship – access to a special confidante and friend; skills development; access to a broad range of first-hand vocational experiences and knowledge; an enhanced social and support network; reciprocal learning and sharing.

For U3A members, the anticipated Project outcomes include: feeling valued, needed and 'making a difference'; contributing to and participating in the life and learning of young people and people with disabilities; applying vocational (trades, professions), personal and life skills in a learning environment – passing on their lifelong learning; receiving recognition as invaluable contributors and teachers to younger generations; companionship; reciprocal learning and skills development; and gaining an enhanced social and support network.



*U3A members on tour of Outlook Community Centre facilities.*



*Project participants enjoying a class together.*

# Grant Program Areas For 2005-06

continued

## Education

Organisation name	Project title	Grant amount
Ardoch Youth Foundation Inc	Local Education Support Centres (total commitment of \$50,000 paid over two years)	\$25,000
Create (Geelong) Inc	Parent Connect Project: providing social and community support using new technologies	\$50,000
Eaglehawk Secondary College	Student Foundation that will assist in the development of networks between the school and the community	\$4,000
Howard Florey Institute	Education pilot project between Institute and Cheltenham Secondary College	\$10,000
Janet Clarke Hall	Development of an artist-in-residence programme	\$10,000
Technology Access for Social Development	Evaluation of the Computer for Every Child Project	\$50,000
The Victorian Foundation for Survivors of Torture Inc	School's in for Refugees Project (total commitment of \$100,000 paid over two years)	\$50,000
Women's Information & Referral Exchange Inc	Women's Financial Literacy – Phase 2	\$49,000
<b>Total grants</b>		<b>\$248,000</b>

## Technology Access for Social Development

(Total Grant of \$50,000)

Technology Access for Social Development – Australia (TASDA) is a not-for-profit company established in March 2005 for the purpose of managing the implementation of the Australian pilot of the Computer for Every Child Project.

### Evaluation of a Computer for Every Child Project

The Computer for Every Child Project (CFEC) provides an exciting opportunity for Government, business and philanthropic sectors to empower children and their families to greatly improve their chances of employment and success by providing them with computer and internet technology.

The Helen Macpherson Smith Trust has given \$50,000 to undertake an evaluation of this pilot project in regard to whether the objectives of the program are being met for students and families and that the model for establishing the CFEC Project is sustainable for the second phase.

CFEC in Australia has emerged from the very successful project of the same name, which has been in existence in Israel since 1995. The Australian pilot (Phase One of CFEC) will run for two and a half years and will involve the provision of internet

connected computers to disadvantaged families for use in their home. Eligible families will have children enrolled in Grades 3, 4 and 5 in Government Primary Schools located in Melbourne's Western suburbs including Braybrook, Dinjerra, Sunvale, St Albans, Sunshine East, and Sunshine North; plus the Victorian Prep-Year 12 College of Koorie Education (campuses located at Morwell, Glenroy, Swan Hill and Mildura).

Access at a young age to computer and internet technology has become a critical requirement for every child to fulfil their true potential. Developed economies, such as Australia's, are increasingly becoming knowledge-based economies in which information in all its forms plays a crucial role in economic processes, including growth and job creation. Individuals with more knowledge get better-paid jobs, firms with more knowledge are winners in their markets, and nations endowed with more knowledge are more productive.

Computer and internet technology at home develops the literacy, computing, and internet skills required for the educational and occupational situations of all family members. With no access to this technology, people from socially and economically disadvantaged backgrounds are increasingly likely to fall

even further behind their peer group in competing for better paid jobs. This is particularly the case for children.

There are certain groups of people in Australian society at high risk of poverty. These groups have limited or no access to computers or the internet. This creates a 'digital divide' which, in turn, places additional barriers to their ability to improve their lives.

CFEC's mission is to target exactly those families and, in particular, children that have no access to either computer or internet technology. CFEC will provide eligible families with a computer for use in their home. The package will include software, internet connection and access to a Help Desk. Basic computer training will be provided to the student and a family member.

By targeting the 'digital divide', CFEC aims to make a major difference to the future of participating children and their families; and, at the same time, build the social, educational and economic capital of Victoria and the nation. It will provide new exciting options for those in our society who most need it. It aims to empower the children to compete in today's modern economy equipped with the computer and internet literacy they will require to succeed.



## CREATE (Geelong) Inc

(Total Grant of \$50,000)

CREATE is a not-for-profit community organisation committed to focusing upon the strengths found within individuals and the community through the delivery of a wide range of personal and vocational education programs.

### **Parent Connect: Fostering social and community support using new technologies**

There is growing concern about the digital divide in Australia. A home computer and ready access to the information age, particularly in families with children, is now the norm for many. Australian Bureau of Statistics (1999) data show the number of Australian households with a home computer increased from 42.5 per cent in 1998 to 46 per cent in 1999, and is now more than 50 per cent. Yet while the use of the internet is increasing, it is still unaffordable to many.

Households with low incomes and in the more disadvantaged areas are less likely to have computer access. Those who own their own homes appear to be more likely to own computers and have internet access than are private renters or those in public housing. Children from low-income families are even less likely to have access to a computer at home, or to the well-resourced classrooms, libraries and computer labs used by students from better off families. In disadvantaged communities such as Heathdale on the outskirts of Geelong, computer access is denied to the majority of families. More than 50 per cent of households in that area don't use computers or connect to the internet.

The common desire to link education and community in an effort to redress disadvantage led to the establishment of a partnership which seeks to reduce such disadvantage by enabling access to services, developing employment opportunities for parents in the local neighbourhood and strengthening school community partnerships. The organisations comprising the partnership are Infoxchange, the Education Foundation, Glen Orden Primary School, CREATE and Neighbourhood Renewal.

Parent Connect is a whole-of-community project with the potential to provide a number of benefits beyond connectivity:

- improved cooperation across the areas of education, health and community;
- an effective prevention strategy with associated educational, social and economic benefits for a disadvantaged group;
- the school will have strengthened connections with its parent community;
- parents will be more engaged in their child's education;
- parents will be more engaged in their own learning and development; and
- parents' skill levels/computer literacy will improve.

Parent Connect brings together philanthropy, government, the not for profit sector and local agencies in a unique collaboration. This pilot project will develop and trial an online community for families in the

Heathdale area, a high-need area designated as a priority for the Victorian Governments Neighbourhood Renewal Program. It aims to provide an adjunct to traditional school and community supports, foster links between isolated parents and engage these parents in community-based computing training at the school. Strengthening connections and social networks through the school will contribute to building a greater sense of community.

It will also increase the IT resources available in a disadvantaged community thus providing a case study of a project designed to redress the marked inequities in access to technology and the information it houses. The project will also provide vocational oriented training to parents needing to re-enter the workforce. Links will be created with the local business community to establish the computer skills required in the local business community. A training program focusing on development of these skills will be established. Linkages with local services will ensure that other support mechanisms will be identified to assist in the home-to-work paradigm shift.

This project will also provide each participant with: a Green PC supplied with licensed software and 12 months' internet access; a comprehensive training program with a vocational orientation; access to the Parent Connect web portal that will contain a wide range of information on school activities, education and employment programs, discussion forums, local services and weekly newscasts.

## Grant Program Areas For 2005-06

continued

### Employment and Vocational Training

Organisation name	Project title	Grant amount
Taskforce Community Agency Inc	Work Ready program targeted to secondary school students (Years 10, 11 and 12) who are at entry level in to the workforce. Aims to teach skills to enhance future employment opportunities	\$15,000
Disability Employment Action Centre	Fitted For Work service to help unemployed and disadvantaged women gain jobs	\$10,000
Horn of Africa Community Network Inc	The Ambassador newspaper internship program for professional and semi professional men and women from Horn of Africa backgrounds	\$50,000
Jesuit Social Services	PermaSkills Project: aims to create opportunities and pathways to training and employment for young people and other community members of the Atherton Gardens Housing Estate (total commitment of \$75,000 paid over three years)	\$15,000
Royal Melbourne Institute Of Technology	Keys to the Future – assist disadvantaged and other workers make the transition to sustainable employment	\$120,000
Try Youth And Community Services	Our Future Our Place Project: provide long term unemployed youth in the Latrobe Valley with skills and qualifications to gain employment in the building and construction industry	\$10,000
Richmond Fellowship Of Victoria	Trinity Community Handiperson's Service: provides people with a psychiatric disability with pre-vocational work experience (grant paid over three years)	\$50,000
Social Firms Australia Ltd (SoFA)	Developing the social firm sector in Victoria (grant paid over three years)	\$210,000
<b>Total grants</b>		<b>\$480,000</b>





## Disability Employment Action Centre

(Total Grant of \$10,000)

DEAC is a Melbourne-based, not-for-profit organisation founded in 1984 and provides employment services to assist people with a disability and those from a disadvantaged background.

### Fitted for Work

Fitted for Work is a service committed to helping unemployed and disadvantaged women gain jobs and financial independence. It offers business clothing, presentation and interview skills, and résumé advice and seeks to build self-confidence and assist women on the path to self-sufficiency. Modelled on a service that has proven to be effective and successful in the USA, the UK, Canada and New Zealand, it is premised on the fact that appearances really do count for women, and that employers are looking for well-presented candidates at interview.

The Disability Employment Action Centre (DEAC) recognised that Fitted for Work would fill a vital gap in the process of connecting disadvantaged women with work opportunities and offered to auspice the project enabling Fitted for Work to begin a pilot program in July 2005.

A grant from the Helen Macpherson Smith Trust enabled a part-time coordinator to be employed allowing Fitted for Work to greatly expand and develop. Fitted for Work now has 50 dedicated volunteers and to date has serviced 680 clients.

The following case study, featured in an article in *The Age* in May 2006, illustrates how the service works: at the age of 47, Filomena Azzato had given up working in cleaning and catering because of back and knee injuries. Having re-skilled in clerical work, she was about to go on her first interview. Like many long term unemployed women, her wardrobe did not include business clothing nor could she afford to pop into Myer to buy something.

Filomena's employment consultant referred her to Fitted for Work. In the boutique, a Fitted for Work volunteer helped Filomena to find a head-to-toe outfit in which she looked and felt good. They discussed how she could best present herself and worked



*The Fitted for Work boutique.*



*The boutique in action.*

together on her interview skills. The end result was that Filomena Azzato got a full-time clerical job.

The one-on-one attention that Filomena and other clients receive boosts their confidence at this critical time when they are taking their first tentative steps onto the job market. A recent report by Professor Barbara Kamler of Deakin University about volunteers' experiences at Fitted for Work notes, "One

of the most powerful characteristics of the interactions described by the volunteers was the capacity to give clients hope."

Fitted for Work is building a network of support among people in the community, especially women, who understand the advantages they have and want to help other women, less fortunate than they have been, to gain the same choices and opportunities.



# Grant Program Areas For 2005-06

continued

## Environment

Organisation name	Project title	Grant amount
Gould Group	Schoolgrounds for Living and Learning 2006-08: Program provides training for teachers related to all themes of sustainability (paid over three years)	\$150,000
Victorian National Parks Association	The Victoria Naturally Project: addressing the threats to Victoria's bushlands and wildlife (total commitment of \$178,776 paid over two years)	\$89,388
<b>Total grants</b>		<b>\$239,388</b>

### Victorian National Parks Association

(Total Grant of \$178,776)

The Victorian National Parks Association is a nature-based conservation organisation, which was established in 1952. It seeks to influence the development and management of Victoria's conservation reserves system. Its future focus is on the need for biodiversity protection and landscape restoration.

#### The Victoria Naturally Project – addressing the threats to Victoria's bushlands and wildlife

In order to address the threats facing Victoria's bushlands and wildlife, the State's main environment organisations, including the Victorian National Parks Association, Trust for Nature, Greening Australia Victoria, the Australian Conservation Foundation, Environment Victoria, The Wilderness Society, the Australian Bush Heritage Fund and the Invasive Species Council have formed an alliance called Victoria Naturally. Hosted by the Victorian National Parks Association, it also includes expertise from Deakin University.

Victoria has lost over 60 per cent of its native vegetation – more than any other State in Australia. 44 per cent of Victoria's native plants and 30 per cent of our native animals are now threatened or extinct. With the climate crisis, the situation is even more urgent. Many species may be unable to survive rapid climatic shifts.

The long term goal of the Victoria Naturally project is to achieve healthy ecosystems and flourishing biodiversity for Victoria, and for the Victorian community to value and celebrate this unique and irreplaceable environmental heritage. It is expected to be a 10 to 20 year project.

Victoria Naturally is working cooperatively with other like-minded organisations with a common long term vision, sharing knowledge and raising awareness and understanding of the issues in the community. It believes that we can get both strategies and resources in place that will reverse biodiversity decline.

While the community cares deeply about Victorian landscapes and the long term health of our natural environment, further awareness and education about the community benefits of healthy biodiversity, land and catchments are needed if we are to reverse the decline in our natural environment.

Victoria Naturally has undertaken market research in order to understand what information the community needs to help them to protect nature. Victoria Naturally is using the results of this research to develop community education materials and activities.

A two-year grant from the Helen Macpherson Smith Trust has provided crucial funding to support the Communications component of the Victoria Naturally Project. The project is also supported by the John T Reid Charitable Trusts, the Reichstein Foundation, the Dara Foundation and individual donors.

In response to Victoria Naturally's work to date, the Victorian Government is currently undertaking an all-of-government analysis of the problems facing our land and catchments through a White Paper process on Land Health and Biodiversity. Victoria Naturally will work to ensure that the community is informed, engaged and able to submit their knowledge and views to this process.



*Nature is threatened by climate change: more fires, warmer and drier weather.*



*Pygmy possum. Photograph: Linda Broome.*

The Victoria Naturally project is hugely significant. The combined vision and strong partnerships between a broad diversity of environment organisations has the potential to not only reverse the decline of the environmental health of the Victorian landscape, but also to deliver a significant natural environment restoration program for Victoria.

Victorians will have greater opportunities to create positive change by expressing their love of and concern for Victoria's natural environment through the Victoria Naturally project.



## Health

Organisation name	Project title	Grant amount
The Alfred Hospital	Burns & Reconstructive Operating Theatre – The Alfred Centre (total commitment of \$250,000 paid over two years)	\$125,000
Alzheimer's Disease and Related Disorders Association of Victoria Inc	Mind your Mind – Phase 2: a community health education program which focuses on risk reduction for dementia (total commitment of \$250,000 paid over two years)	\$125,000
Arbias	Production of a broadcast quality documentary on acquired brain injury	\$20,000
Arthritis Foundation of Victoria Inc	Early Arthritis Network	\$2,500
Bairnsdale Regional Health Service – Bairnsdale	Oncology and dialysis facilities	\$20,000
Banksia Palliative Care Service Inc	Learning Centre: expand participation in specialist palliative care training programs in regional and rural areas	\$10,000
The Burnet Centre	Relocation and construction of new premises for Macfarlane Burnet Research Institute (total commitment of \$500,000 paid over five years)	\$100,000
The Butterfly Foundation	Day Centre for Early Intervention, Ongoing Treatment and Support for Adolescents with Eating Disorders (total commitment \$150,000 paid over three years)	\$50,000
Dental Health Services Victoria	Wheelchair tilter	\$30,000
Echuca Regional Health	Health Promotion Caravan	\$10,000
Haemophilia Foundation Australia	Family Camp	\$2,500
Kiwanis House Special Needs Centre Inc	Autism Spectrum Disorder Social Skills Programs in the Goulburn Valley Region	\$13,500
Lupus Australia Foundation	Awareness and Education Program to coincide with World Lupus Day	\$2,500
Monash Institute Of Medical Research	Research Project: Identification of endometrial cancer stem cells	\$33,393
Positive Women (Victoria) Inc	'In The Family' theatre production – support to assist development towards touring production to regional Victoria	\$10,000
Royal Children's Hospital Foundation Limited	Human Gene Chips: Assist in research into intersex disorders in children	\$100,000
Royal District Nursing Service	Contribution to the establishment of the Helen Macpherson Smith Institute of Community Health (total commitment of \$750,000 paid over five years)	\$100,000
St John Ambulance Australia (Victoria) Inc	Purchase of equipment	\$25,000
Very Special Kids Inc	Data Management System upgrade	\$20,000
Victorian Aboriginal Health Service Co-operative Limited	Healing Our Way Camp for indigenous women with breast cancer	\$15,700
Victorian Deaf Society	Auslan Interpreting Mentorship Program	\$10,000
Victorian Endowment for Science, Knowledge and Innovation	Collaboratively funding the return of an outstanding nanotechnology scientist under the VESKI Victorian Innovation Fellowship Program (paid over three years)	\$300,000
West Wimmera Health Service	Contribution towards the rebuilding of the Nhill Hospital (total commitment of \$200,000 paid over two years)	\$100,000
Wings of Care – Kanfei Chesed Inc	Art lessons	\$1,500
<b>Total grants</b>		<b>\$1,226,593</b>

# Grant Program Areas For 2005-06

continued

## Victorian Endowment for Science Knowledge and Innovation (VESKI)

(Total Grant of \$300,000)

VESKI (Victorian Endowment for Science, Knowledge and Innovation) is a charitable institution working to enhance Victoria's intellectual capital through a dynamic program of fellowships, awards, and international networks.

### VEKSI Innovation Fellowships – return of a Nanotechnologist

VESKI is an initiative to identify outstanding expatriates and leading researchers and bring them to Victoria for the benefit of the Australian economy. It is all about great science, and building creative linkages between the scientific research and design communities, with particular emphasis on science, information communication technology (ICT) and design.

Currently funded from the interest earned on a \$10 million endowment held by the Victorian Treasury, VESKI actively seeks additional funds through collaborations, potential donations and gifts, and strategic partnerships with key business, academic and philanthropic organisations such as the Helen Macpherson Smith Trust.

VESKI's main program is the VESKI Innovation Fellowships – a program to return to Victoria successful Australian expatriates with outstanding skills in the fields of science, innovative technology and design.

It also achieves its objectives by:

- bringing leading researchers to Victoria;
- creating community awareness through local and international campaigns;
- fostering a culture of innovators; and
- establishing and managing a support infrastructure.

With particular focus on bringing outstanding expatriates and leading researchers to Victoria, VESKI creates a positive environment that enhances the State's intellectual capital in science, knowledge and innovation for the benefit of the broader Victorian community.

VESKI leverages the talents of the VESKI Innovation Fellows to inspire and innovate others, implementing activities which allow them to share their vision with peers, colleagues and local and regional Victorians.



*Dr Cait McPhee, nanotechnologist, recipient of the VESKI Innovation Fellowship.*

*"The VESKI initiative is just a start. It is an imaginative programme to lure Australians back to Victoria and it is passionate about bringing wealth to Victoria through science and technology."*

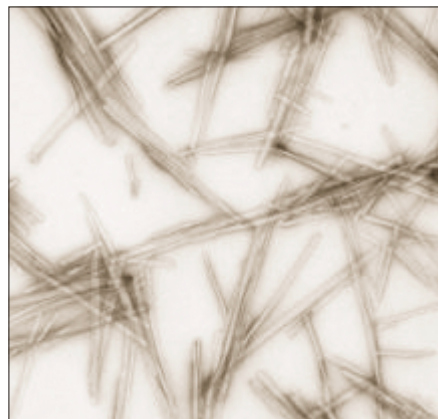
*Professor Andrew Holmes,  
Inaugural VESKI Fellow*

### VESKI Innovation Fellowship Program

Collaborative funding from the Helen Macpherson Smith Trust has enabled VESKI to arrange the return to Victoria of an outstanding biophysicist working in the area of nanotechnology under the VESKI Innovation Fellowship program.

The recipient of the VESKI Innovation Fellowship, Dr Cait McPhee, has an outstanding record of achievement in molecular sciences and is now forging her talents as a biologist within a physics environment. Recent research interests include: the production of novel and bionanomaterials and technologies; and Nanotechnology – the characterisation, directed assembly and manipulation of amyloid fibrils: towards nanowires and self-wiring circuits and cataract and crystallin proteins.

Victoria has funded and is continuing to fund world-class infrastructure and leading nanotechnology research activities. This appointment builds upon the nanotechnology cluster here in Victoria and will directly contribute and challenge research undertaken on the global stage, ensuring the rapid exploitation of innovation.



*Manipulation of amyloid fibrils.*

The official award of the 2006 Fellowship was made on 23 October 2006 at a gathering of eminent medical researchers at which the speakers were the Hon. John Brumby, Minister for Innovation; Darvell Hutchinson AM, Chairman of the Helen Macpherson Smith Trust; and Professor Adrienne Clark AC, Chairman of VESKI.

### VESKI Development Program

Additional funding from the Helen Macpherson Smith Trust has also been provided to support a developing program which will facilitate and stimulate debate around current nanotechnology initiatives and challenges in Victoria.

This program will bring key representatives across academia, government and industry, together with internationally renowned leaders to identify future opportunities and desired outcomes with key stakeholders, ensuring that we:

- build on our strengths – to support our leading researchers;
- strengthen collaborative arrangements for research; and
- enhance our international standing.

By leveraging these partnerships, we will ensure broader collaboration, which in turn will foster better outcomes for Victoria.



## The Alfred Hospital

(Total Grant of \$250,000)

The Alfred is one of Australia's leading hospitals. Its priority is high quality, cost effective patient care founded on excellent practice, teaching and research. Its aim is to care for everyone, no matter how complex their health problem. It strives as a team to provide services and care which improves the quality of life of its patients.

### Burns and Reconstructive Operating Suite – The Alfred Centre

The Alfred hospital is a designated trauma centre for Victoria and is the busiest trauma centre in Australia. This means the conflict with emergency is particularly acute at The Alfred, although the same problems occur to varying degrees right across Australia's healthcare system.

To solve this problem, a completely new, purpose built facility is shortly to open on the corner of Punt Road and Commercial Roads, Prahran, to concentrate on scheduled surgery and diagnostics. A joint development between The Alfred and Victoria's Department of Human Services, The Alfred Centre represents a new and innovative model of healthcare. The new facility will completely separate emergency services from scheduled services and provide patient centred care that is guaranteed to take place at an agreed time.

The Alfred Centre will be a world-class facility with emphasis on early diagnosis, innovative, minimally invasive procedures, short stay procedures and outpatient follow up. Waiting lists will be significantly reduced and Victorians will have access to a greater range of procedures, with much shorter hospitalisations than before.

Following on from the Trust's substantial support of the Helen Macpherson Smith Burns Unit at The Alfred, it is now assisting the state-of-the-art fit-out of the Helen Macpherson Smith Burns & Reconstructive Operating Suite in this wonderful new facility.

Reconstructive surgery plays a key role in the recovery of patients afflicted with burns and other traumas, cancer and vascular ailments. Many burns patients are left with major scarring which can take years of skin grafting and successive plastic surgery operations to restore to their previous state. The Helen Macpherson Smith Burns & Reconstructive Operating Suite will provide



*The purpose built Burns and Reconstructive Operating Suite at The Alfred Hospital.*

a broad spectrum of these services as well as reconstructive surgery for breast cancer patients, hand surgery and facial reconstruction.

The Trust's grant of \$250,000 will provide the electronic operating table, anaesthetic machine, ventilator, monitoring, pendants and a comprehensive collection of microsurgical instruments to permit the most delicate and, where possible, minimally invasive procedures in the long road to recovery.

The Alfred Centre will treat more than 20,000 inpatients and 28,000 outpatients annually. With this new theatre, the public waiting list for general reconstructive surgery (excluding facial), skin subcutaneous tissue and breast procedures is expected to reduce from 4,300 to fewer than 2,500 in The Alfred Centre's first full year of operations.





# Investments and Grants

## An Historical Perspective

On her death in 1951, the late Helen Macpherson Schutt left a bequest of £275,000 for the establishment of a charitable trust in perpetuity to benefit all Victorians.

The impact of this lasting legacy from Helen to the people of Victoria is exemplified in a summary of capital growth and grants over the 54 years of the Trust.

The value of the corpus has now grown to \$91 million, as reflected in the following table:

### Corpus Investments

#### Year ended June

	Book value \$000's	Market value \$000's
1952	550	-
1965	1,049	-
1975	3,270	-
1985	8,748	-
1995	23,388	-
2000	41,046	49,700
2001	42,702	58,612
2002	45,610	62,364
2003	53,558	57,834
2004	57,873	65,123
2005	64,792	78,189
2006	69,230	90,947

### Grants

Grants approved from the income earned on these investments have been:

Five years ended	\$000's
1970	93
1975	379
1980	1,324
1985	3,382
1990	7,712
1995	11,676
2000	9,883
2005	20,484
Year ended	
2001	3,133
2002	4,192
2003	3,552
2004	5,286
2005	4,321
2006	4,649
<b>Total grants</b>	<b>59,582</b>

# Financial Summary

## Income Statement for the Year Ended 30 June 2006

	2006 \$	2005 \$
<b>Revenue</b>		
Income from investments	11,651,081	15,180,676
Total expenses	(891,156)	(1,067,566)
<b>Operating surplus</b>	10,759,925	14,113,110
Grants approved during year	(4,649,069)	(4,321,465)
<b>Surplus for year</b>	6,110,856	9,791,645
Attributable to capital account	4,419,108	6,887,805
Attributable to income account	1,691,748	2,903,840
	6,110,856	9,791,645

## Balance Sheet as at 30 June 2006

	2006 \$	2005 \$
<b>Accumulated funds</b>		
Retained surpluses – capital	69,531,181	65,476,218
Available for sale financial assets reserve	21,716,749	13,397,015
Other reserves	5,055,894	3,000,000
<b>Total accumulated funds</b>	<b>96,303,824</b>	<b>81,873,233</b>
<b>Current assets</b>		
Cash and cash equivalents	8,965,265	4,795,744
Trade and other receivables	5,047,774	4,861,865
Current financial assets	1,725,425	1,487,596
<b>Total current assets</b>	<b>15,738,464</b>	<b>11,145,205</b>
<b>Non-current assets</b>		
Other financial assets	84,427,340	73,927,896
Office furniture and equipment	33,196	37,305
Leasehold improvements	20,228	36,794
Computer equipment	7,429	-
Trade and other receivables	-	149,122
<b>Total non-current assets</b>	<b>84,488,193</b>	<b>74,151,117</b>
<b>Total assets</b>	<b>100,226,657</b>	<b>85,296,322</b>
<b>Current liabilities</b>		
Trade and other payables	3,922,833	3,423,089
<b>Total liabilities</b>	<b>3,922,833</b>	<b>3,423,089</b>
<b>Net assets</b>	<b>96,303,824</b>	<b>81,873,233</b>
<b>Held for:</b>		
Corpus	91,002,264	78,450,134
Income	5,301,560	3,423,099
	<b>96,303,824</b>	<b>81,873,233</b>

# An Historical Insight

## Benefactress – Helen's Married Life



William John Schutt



Helen Macpherson Schutt

*As in previous Annual Reports, we continue to provide a variety of insights into the personal background of our benefactress Helen and her lasting legacy.*

*Our past three Annual Reports have highlighted Helen's forebears, the Smiths and the Macphersons. This year we look at Helen in her adult years and her life with husband, William Schutt.*

Helen married William John Schutt, Barrister, on 11 December 1901, at Toorak Presbyterian Church. Helen was aged 27 and William aged 33 years. The Reverend John Macrae officiated and Helen was attended by three bridesmaids: her cousin, Ada Howard and friends, the Misses Rosa Menzies and Elsie Ingram. William's best man was a Mr A.O. Henty. The wedding and reception at the Smith family home, Egoleen in Clendon Road, Toorak, was a glittering occasion, reported in detail in *The Australasian*, *Table Talk* and *The Herald*.

Helen's wedding dress, press reports say, was "a lovely creation of richest ivory satin duchesse" and her veil was of "rare old Honiton lace, fastened over the tiara of orange blossoms with a diamond star". At her neck she wore a gift from William, a diamond crescent.

If the planning of Helen's wedding is any indication, she had a strong inclination to the romantic. For her bridesmaids, *The Herald* reports she chose hats of "Java straw, trimmed with La France roses and

lace" and when she left for her honeymoon in the Blue Mountains of New South Wales, Helen wore a tailor-made blue gown and a hat "of Tuscan straw, trimmed with pink roses".

Wedding guests came from as far away as Scotland and Jersey, Sydney and Ballarat and the couple's wedding gifts ranged from a silver and glass mustard pot to the Toorak villa, Wyahla, in Clendon Road, with piano and dining room furniture, given by the bride's father, Robert Smith.

Egoleen was handsomely decorated for the occasion, and *The Australasian* reported: "Subsequently, refreshments were served to the wedding guests at numerous small tables... the decorations consisted of masses of glorious flowers, each table having a different arrangement, while overhead soft festoonings of rosebuds and rhododendrons were carried from the walls, meeting at the centre chandelier, where they united in a wealth of clustering blossoms. In the drawingroom, where the reception was held, the floral decoration scheme was chiefly white. The bow window was festooned with flowers and white draperies and it was here the bride and bridegroom stood".

Helen and William travelled to Sydney, then on to the Blue Mountains for their honeymoon where they stayed at Yester Grange, built for Goodlet and Smith, the family building company based in Granville, New South Wales. Used by its Managing Director, William Smith and his wife Susan, Yester

Grange stands on the edge of the ridge above the spectacular Wentworth Falls and is surrounded by a manicured garden of 10.5 acres and specimen trees from all over the world. From the front verandah, the view of the Jamison Valley is breathtaking. It is believed to have been named by William Smith after Yester House in Gifford, near Edinburgh, Scotland and there is also a Yester Grange in the Shetland Islands. Built from New Zealand kauri timber and with an iron roof, Yester Grange, a house of 74 squares, was bought in 1902, the year after Helen and William's visit, by Sir John See, Premier of New South Wales between 1901 and 1905.

Helen and William returned to live in Toorak near Helen's parents, at the villa which was their wedding gift, Wyahla in Clendon Road, popularly known today as the Toorak Heroes' Club. Though the area of land on which the house stands has been subdivided and has undergone extensive renovations, the house still stands at 72 Clendon Road and has belonged to the Toorak R.S.L. Memorial Trust since 1958. In November 1905, a year after Robert's death, Helen's mother, Jane Priscilla, bought Allotment 12 Toorak Road (next door to Oakdene, which she already owned). This land backed on to the property owned by Helen and William at 72 Clendon Road, an indication of Priscilla's wish to be near her daughter.

Helen and William appear to have been a kindly couple, shown by their relationship with Anne Kate Coles, (née Shutt (sic)) a





second cousin of William, who became their housekeeper. Mr Patrick Holder, who married Anne Kate's granddaughter Joan Morison, says that Helen's kindness was often talked about within the family. Helen and William Schutt befriended Anne Kate when her marriage broke up, and she became their companion/housekeeper, bringing her daughter Kitty with her.

Later, when Helen left to live in Europe, William Schutt bought the property at 14 Robinson Road, Malvern called The Chalet in which he and Helen installed Anne Kate and her daughter. William apparently stayed at The Chalet on his travels between Europe and Australia. On William's death, the property passed to Helen, who kept the arrangement in place. She also gave her christening robe, dressing table silver and other mementoes to her housekeeper. These have been kept in the family first by Kate's granddaughter, Joan Morison and on her death, by Joan's husband, Mr Patrick Holder.

One of the many unanswered questions about Helen Macpherson Schutt is exactly why she left Australia in December 1923 to live in Europe. She was 49 and she and William had been married for 22 years. Whether or not Helen planned to return to Australia some time in the future, she never did so, and the generally accepted reason in her circle was her 'intense dislike' of sea travel.

On 24 December 1923, Helen left Melbourne on the RMS Ormonde, a ship of the Orient Line of Royal Mail Steamers under the command of Captain H.G. Staunton and bound for 'London via Ports'. Two days before the ship's departure, the local press records a 'brilliant dance' being held on board, attended by a glittering array of Melbourne society, including the Clarkes, the Grimwades, Symes and Fairbairns. On the voyage, Helen was accompanied by her husband William and her cousin, Lily Smith. Justice Schutt disembarked in Colombo, while Helen and Lily travelled on to Toulon. In October 1924, the *British Australasian* reports that Helen and William, accompanied by Lily Smith, were "staying at the Oxford & Cambridge Hotel in Paris for a fortnight before leaving for Belgrade and Constantinople. They have lately been in Denmark, Norway and Sweden".

In 1925 the Schutts drove around Europe, with Miss Audrey Wells as companion, before going to London where William attended a congress of Universities of the Empire, representing the University of Melbourne.

In early March 1927, the *British Australasian* notes that among many recent Australian visitors to Nice is Mrs Schutt of Melbourne at the Hotel Splendid and in mid-April "Mrs Schutt, who has been for some time on the Riviera, is shortly going to Dalmatia with her husband who has just arrived from Australia".

In August, the Schutts were in Paris, after touring Scotland, Ireland and Norway. Following a week in Nice, they planned to "motor back to Paris via Avignon, Pau and Biarritz".

In 1928, the Schutts are reported travelling together, with William first returning to Australia in January of that year. Mrs Schutt, the same paper reports "is remaining in Europe until his return, about June of this year". In August the same year, William journeyed to Scotland, then took the Northern Capitals tour of Scandinavia, while Helen remained 'for the present' in Paris. On William's return by mid-September, William and Helen stayed in London at the Hotel Washington.

In October 1928 they were on the Continent, but spent two weeks in London in November. The paper reports that they are "going to the Riviera until January, after which Mr Schutt may probably go to Wengen at Christmas for winter sports. In January he is going to Melbourne in the Otranto and return to England before long via the US. Both Mr and Mrs Schutt have enjoyed excellent weather in France, and a motor tour in the beautiful French chateau country was all the more delightful because of the sunshine. Perhaps some readers of this paper know what an amusing companion Mr Schutt is. He has a stack of good stories – unconnected with the 'chestnuts' family, and tells them excellently".

# An Historical Insight

continued

## Benefactress – Helen's Married Life (continued)

In the *British Australasian* dated 2 November 1933, just weeks before William's death, journalist Guy Innes (whose wife was chairman of the hospitality committee of the Commonwealth League) reports: "The Hon. William Schutt and Mrs Schutt were recently motoring in France when their tour came to a sudden and unfortunate end at Nice, when Mrs Schutt developed acute appendicitis and had to undergo an immediate operation. It was happily successful and Mrs Schutt, who was taken to a nursing home at Cimiez (a suburb of Nice) is now convalescent. Mr Schutt, who is now in London, had intended coming to England earlier, leaving Mrs Schutt in the Riviera, as she prefers the south to England at this time of the year. It was three weeks however before she was sufficiently recovered for Mr Schutt to feel happy in making his visit to London, though Mrs Schutt has many friends on the Riviera where she spends much time".

While she lived in Australia, Helen had been a regular donor to several charities and when in Europe, Helen remained a thoughtful philanthropist, continuing to give to her favourite Melbourne charities. The Royal District Nursing Service received personal donations from Helen until 1947, some 24 years after she had left Australia to live in Europe. Other recipients were the charities known today as the Royal Children's Hospital, Lost Dogs' Home, the Mission to Seamen, the Royal Society for the Prevention of Cruelty to Animals, and the Royal Victorian Institute for the Blind.

When not travelling around Europe, Helen's life abroad from 1924 until the threat of World War II, was spent mainly on the French Riviera and in Switzerland. Though Helen spent considerable time in the South of France, she apparently did not become part of the coterie of British who regularly wintered there. Rather, her life centred on the gentle pleasures, the agreeable climate and the coastal beauty of the French Riviera.

Both beautiful and elegant, Helen is remembered by those who knew her for her kindness, her regal bearing and exquisite taste in clothes. Loyal and generous, especially to her close family, when she left Australia in December 1923, she carefully organised gifts to mark significant anniversaries of family members with instructions for their despatch at the appropriate time.

William Schutt was a very public figure, taking a leading part in Melbourne's social and legal circles.

Although they lived separately from 1923, with Helen in Europe and William in Australia, they had an enduring relationship, unusual for its time. It ended tragically with William's early death in 1933, leaving Helen to eighteen years of widowhood before her passing in April 1951.





*Helen's hand written note reflects the generous intention of her legacy to the many Victorian charities that have benefited from that generosity, and to those that will do so in the future.*

**Helen Macpherson Smith Trust**

Level 43, 80 Collins Street  
Melbourne Victoria 3000

Telephone (+61 3) 9631 2551

Facsimile (+61 3) 9631 2530

Email [info@hmstrust.org.au](mailto:info@hmstrust.org.au)

Website [www.hmstrust.org.au](http://www.hmstrust.org.au)