



honest

HELEN MACPHERSON SMITH TRUST *Annual Report 2007*

## HELEN MACPHERSON SMITH TRUST

is an independent perpetual philanthropic trust established by Helen Macpherson Schutt (*née Smith*) in 1951 for the benefit of Victorian charitable institutions.

We approve grants to a wide variety of eligible charities and a diverse range of projects that seek to benefit the people of Victoria.

AGED CARE + ARTS, CULTURE & HERITAGE +

COMMUNITY SUPPORT + DISABILITY CARE & SUPPORT +

EDUCATION + EMPLOYMENT & VOCATIONAL TRAINING +

ENVIRONMENT + HEALTH

## Contents

<b>2</b>	<b>About Our Founder and Her Legacy</b>	<b>3</b>	<b>Trustee's Report</b>
<b>6</b>	<b>Grants Overview</b>		
<b>8</b>	<b>Grants Approved in 2006–2007</b>		
8	AGED CARE		
11	ARTS, CULTURE & HERITAGE		
15	COMMUNITY SUPPORT		
22	DISABILITY CARE & SUPPORT		
25	EDUCATION		
29	EMPLOYMENT & VOCATIONAL TRAINING		
32	ENVIRONMENT		
34	HEALTH		
<b>38</b>	<b>Investments and Grants: <i>An historical perspective</i></b>		
<b>39</b>	<b>Financial Summary</b>	<b>40</b>	<b>An Historical Insight: <i>The Smiths in Australia</i></b>

### TRUSTEES

Darvell M Hutchinson AM  
*Chairman*

J Barry Hutchins OAM  
*(retired 15 February 2007)*

Keith B Smith  
*(appointed 15 February 2007)*

Frances H Awcock AM  
*(appointed 1 May 2007)*

### STAFF

Anthony H B Baird  
*Investments Executive*

Darren J McConnell  
*Finance Executive*

Elizabeth M Gillies  
*Grants Executive*

Sarah C Bartak  
*Grants Administrator*

Pamela J Beech  
*Office Administrator*

Apollonia A M Catalano  
*Administrative Assistant*

### INVESTMENT COMMITTEE

Darvell M Hutchinson AM  
*Chairman*

J Barry Hutchins OAM  
*(to 15 February 2007)*

Frances H Awcock AM  
*(from 1 May 2007)*

J Gordon M Moffatt AM

John A Bryson

Anthony H B Baird

Darren J McConnell

### BANKERS

National Australia Bank

### LEGAL ADVISERS

Freehills

### AUDITORS

PKF

### CONTACT INFORMATION

The office of the Helen Macpherson  
Smith Trust is located at:

Level 43, 80 Collins Street  
Melbourne Vic 3000 Australia

T (+61 3) 9631 2551

F (+61 3) 9631 2530

E [info@hmstrust.org.au](mailto:info@hmstrust.org.au)

[www.hmstrust.org.au](http://www.hmstrust.org.au)

Guidelines for grant applications  
are available on our website.

---

The capital of the Helen Macpherson Smith Trust was valued at 30 June 2007 at \$109 million.

---

Grants totalling \$4.4 million were approved in the year bringing aggregate grants to \$64 million since the Trust was established.

---

The life of Helen Schutt was not one that made headlines. She lived comfortably and quietly, first in Melbourne, then in Europe, secure in the financial and social legacy of her family.

Helen was particularly fortunate in her forebears: on both sides they were hard working and energetic Scottish immigrants. On the Macpherson side they were good judges of land and excellent farmers while the Smiths were entrepreneurs with a talent in business, particularly as timber merchants. Helen was born Helen Macpherson Smith in Scotland in 1874 to her Scottish father, Robert Smith and her Australian mother of Scottish descent, Jane Priscilla Macpherson.

Helen attended school in Scotland, Europe and Australia.

In 1901, aged 27, Helen married William John Schutt. He was 33 years old, a barrister, raconteur, Essendon footballer and later to become a Justice of the Victorian Supreme Court. Of the 22 years of their married life in Melbourne, little is known. They had no children and Helen's name rarely appeared in the social pages of newspapers or magazines.

It is through the reporting of William's life, especially after his retirement from the bench, that we learn something of Helen's life in Europe, where she lived from early in 1924 until her death in 1951.

In Europe, Helen travelled widely, living mainly in both Switzerland and the south of France. She and William made extensive trips together in Europe, their activities widely reported in the press.

William Schutt died in 1933, aged 65, after an accident on board ship while returning to Australia from one of his many visits abroad to travel with Helen.

In April 1951, while living at the Hotel Majestic in Cannes on the French Riviera, Helen contracted pneumonia and died.

Helen's story could have ended there but for the fact that on her death she left £275,000 (\$550,000), being the majority of her considerable wealth, to establish a philanthropic trust to benefit Victorian charities.

Despite this generous benefaction, Helen was buried in a pauper's grave in the Saint Pierre cemetery in Marseilles. Later, acting on instructions from solicitors, her body was exhumed and her remains cremated in accordance with her wishes. Helen's ashes were cast to the winds in the Marseilles cemetery. No tombstone or monument existed in honour of her lasting legacy to society, until the Trustees unveiled a monument beside her parents' graves in the Smith family plot in the Melbourne General Cemetery on St Andrew's Day 2001, to commemorate the 50th Anniversary of the Trust.

The capital value of the Helen Macpherson Smith Trust at 30 June 2007 was almost \$109 million, and in the year to June 2007 the Trustees approved grants of \$4.4 million to fund a range of Victorian charities across most sectors of community life. The grants made are detailed in this Report.

As a perpetual legacy, Helen's Trust will continue indefinitely. Her forebears — both Macphersons and Smiths — were strong, energetic and resourceful. Many family members contributed much to the advancement of Australian colonial life. It is fitting that the financial legacy of Helen and her family continues to leave a lasting mark on Australia and its people.

## Trustees' Report

The 2007 financial year has been another year of growth for the Trust, but also a bittersweet one.

In February, after some 37 years of outstanding service as a dedicated executive trustee, (John) Barry Hutchins OAM retired on 15 February 2007, and passed away on 20 March after battling cancer.

Barry served the Trust with great distinction, and took pleasure in seeing the enormous growth of the Trust over the years.

His work with the Trust was matched by his own voluntary service to the community as a board member, director, or treasurer of many charitable bodies including Odyssey House Victoria, Sandringham Aged Care Association, St Leonard's College, Ormond College University of Melbourne, and the Kingston Centre.

His generous contribution to the community was recognised by his award of a Medal in the Order of Australia in 2000. The citation read: "For services to the community, particularly aged care and drug rehabilitation, and to educational and church agencies."

Barry was a founding director of Odyssey House Victoria in 1978 and continued with the organisation until just weeks before he died. He was awarded Odyssey's highest accolade - being made an honorary graduate of the programme.

As a mark of respect for Barry's involvements across the philanthropic sector, eulogies were published in The Age and the Herald Sun, together with articles in journals of the Helen Macpherson Smith Trust, Odyssey House Victoria, and Ormond College to mention but a few.

The Trust's Chairman, Darvell Hutchinson, Odyssey's Chairman, Nigel Dick, and Barry's son Jonathon, gave the three farewell eulogies to Barry at his funeral, attended by hundreds of mourners.

Darvell paid tribute in his eulogy to Barry as "a true gentleman, an esteemed counsel, a caring and personable presence, generous yet non-pretentious, coupled at times with his lovely calm ability to be laid-back and take life as it comes... thank you for enriching all our lives".

### TRUSTEES

When Barry indicated his desire to retire, Mr Keith B. Smith was appointed as a trustee in February 2007. Keith lives in London where he works as a consultant across the philanthropic sector in the UK. He has been a trustee of various English charities including Oxfam and his writings have covered charity law, management, marketing, and international comparisons. As a management consultant he has assisted the boards, directors, and senior managers of many UK and international charities, primarily on governance, strategy, development, benchmarking and communications. Keith is a great-nephew of the founder of the Helen Macpherson Smith Trust, our benefactress, Helen.

On 1 May 2007, Mrs Frances (Fran) H. Awcock AM was appointed a third trustee. Fran has had a distinguished career in the library and publishing fields. She is probably best known in Victoria for her work as the former State Librarian and CEO of the State Library of Victoria, a position from which she retired in 2002. Since then Fran has been involved in a variety of community organisations including her current roles as Chair of the Victorian Tapestry Workshop, and a Member of the Council of RMIT University. Fran was honoured in 2004 as a Member of The Order of Australia for her contribution to libraries and the community.

We now reflect upon the results of the 2007 financial year.

### INVESTMENTS

The trustees are pleased to report another good year for the investment portfolio.

We were thrilled to see the Helen Macpherson Smith Trust attain a milestone when our corpus passed the \$100 million mark in the second half of the year. Our benefactress Helen would similarly have been greatly pleased to see how her lasting legacy has grown and the impact it now has upon the people of Victoria. Thousands of people from all walks of life across the State have benefited from the gift of just one woman.

The capital value of the portfolio rose from \$91M to \$108.6M as a result of another strong year for the Australian equity market. The Trust, as a fund in perpetuity, has concentrated its investments in long-term securities. As at 30th June, more than 87% of the portfolio was invested in Australian shares with the balance in cash or short-term securities. The Trust's major holdings were in the

## Trustees



Darvell M Hutchinson AM  
*Chairman of Trustees*



J Barry Hutchins OAM  
*Trustee*



Frances H Awcock AM  
*Trustee*



Keith B Smith  
*Trustee*

banking sector, with 30% of the portfolio so invested, together with a strong position in natural resources. The Trust holds collectively 21% of its portfolio in BHP Billiton, Rio Tinto and Woodside Petroleum.

This year when the market rose strongly, there were fewer opportunities to profit from share buybacks. Likewise, the Trust sold fewer call options so as not to lose stock in good companies at less than optimal prices. As the year progressed and share valuations became more stretched, the Trust steadily raised the cash component of the portfolio, and this stood at 13% of the portfolio at year end.

### INVESTMENT INCOME

Operating income excluding dividends from share buybacks and premiums on call options amounted to \$8.20M compared with \$7.15M in the previous year. This represents a return of 7.6% on the market value of investments at the year end, a little lower than the yield of 8.0% in 2006. This was due to the strength in the stock market, where dividends failed to keep pace with capital growth. At the same time, interest rates rose in Australia during the year. Accordingly, a larger proportion of the Trust's income was derived from liquid assets.

### GRANTS

The strong results for the year enabled the Trust to approve grants totalling \$4.4 million to more than 120 different Victorian charities, continuing the broad interest range of the Trust's philanthropic program. You can read about our grantmaking activities in the Grants Overview.

### FINANCE & ADMINISTRATION

The abridged financial statements of the Trust for fiscal 2007 set out in this Report show that total revenue for the year from all sources including the net realised capital gain on sales of investments totalled \$16.19M. Total costs incurred for the year amounted to \$1.09M, reflecting a ratio of 6.7% of revenue.

### STAFF APPRECIATION

Throughout the year, the Trust was ably supported by its team of dedicated staff who continued to provide the support and knowledge to optimise the Trust's philanthropic endeavours.

Two new staff members joined us during the year. Since his appointment as Investments Executive in July 2006, Anthony (Tony) Baird has made a highly-experienced contribution in his role of co-ordinating our investment portfolio and ongoing investment strategies. Darren McConnell, Finance Executive, continued to ably manage the business operations of the Trust and introduced more efficient and thorough finance and investment reporting systems. As you will see from our Grants Overview, Grants Executive Liz Gillies continued the Trust's engagement with creative philanthropy.



## Staff

Sarah Bartak, our Grants Administrator, who also has responsibility for publications, processed our inaugural online Grants Bulletin, and also oversaw the development of a new logo for the Trust, as well as a review of our website.

Pamela Beech continued to provide excellent secretarial support. In the first half of 2007, Lonia Catalano joined the team to provide administrative support in both the Finance and Grants departments and her contribution has been greatly appreciated.

The Trustees would like to express their appreciation to the staff for their dedicated contributions towards the growth of the Trust, and its important grant-giving role throughout Victoria.

## OUTLOOK

At the close of a year which has been tinged with sadness and excitement, we look forward to a bright future for the Trust and its work.

As to our ongoing income levels, we are confident that our strong investment portfolio will provide some further growth in income available for distribution to eligible charities.

As to our corpus, we should at least maintain the value of the portfolio, having further raised the levels of liquid funds since year end. The outcome, of course, is heavily dependent upon no significant weaknesses in stockmarket trends.

Darvell M. Hutchinson AM  
*Chairman of Trustees*

Frances H. Awcock AM  
*Trustee*

Keith B. Smith  
*Trustee*



Anthony Baird  
*Investments Executive*



Darren McConnell  
*Finance Executive*



Liz Gillies  
*Grants Executive*



Sarah Bartak  
*Grants Administrator*



Pamela Beech  
*Office Administrator*



Lonia Catalano  
*Administrative Assistant*

## Grants Overview

6

The Helen Macpherson Smith Trust had a very successful grant-making year — we continued to build on the work of the last few years and focused on fostering stronger and more enduring partnerships with the community sector, all levels of government, and the corporate sector. We supported projects across the breadth of the philanthropic grant-making spectrum.

A considerable number of these projects focused on meeting immediate need. The range of projects supported are a strong indication of the level of trustee support for working to directly assist those who find themselves in difficult circumstances.

Supporting such projects often leads to further support down the track, as the Trust's engagement with these projects enhances our knowledge and understanding of the issues and establishes a platform for ongoing dialogue in regard to future initiatives.

The Trust spent a considerable amount of time during the year, convening and meeting with groups who had similar interests and shared aspirations. We brokered and joined a number of partnerships and worked with these groups to develop applications for collaborative efforts. The Brotherhood of St Laurence project, profiled in this Annual Report, is a good example of such work.

We continued to support joint philanthropic projects - the very important Cunningham Dax project, also profiled in this Report, would not have been possible without the philanthropic partnership between the Helen Macpherson Smith Trust, the William Buckland Foundation, the Ian Potter Foundation and The Myer Foundation.

Notable projects included the launch of Stage 2 of the Macpherson Smith Community Alliance, a jointly managed \$2M fund to support projects arising from the Victorian Government's Community Building Initiative. This project encompasses 19 hubs comprised of 102 Victorian rural and regional towns across the length and breadth of Victoria. Priority areas and progress to date are outlined in the body of this Report.

Another important project was the signing of a Memorandum of Understanding with the now Department of Planning and Community Development to support a significant youth mentoring initiative. Through the Office for Youth, the Victorian Government has funded and supported three Regional Coordination Projects as part of the Mentoring and Capacity Building Initiative. The Trust has supported the establishment of an additional three Coordination Projects: Brophy Family and Youth Services Inc (Warrnambool), St Luke's (Bendigo) and North East Support and Action for Youth Inc (Wangaratta) which will establish Regional Mentoring Hubs across their respective regions. Without the Trust's support, young people in the west, north-east and north-west of the state would have no access to this important initiative.

In addition, the Trust has agreed to support the program evaluation of all six Regional Coordination projects. This evaluation will be overseen by a joint reference group comprised of the Trust, Government and community sector representatives, thus providing a true partnership platform for supporting youth mentoring initiatives across the State. The Trust understands that this is a unique philanthropic partnership and we have been delighted to work with the community sector and the State Government to develop this exciting partnership.

Finally, during the past year, the Trust continued to support the work of the The Agora (Melbourne CityMission), which was a collaboration of the community, business and government sectors to create innovative partnerships to address disadvantage.



The Agora carried out its mission through a program of research, interviews, public forums, conferences and case studies. The conclusion of this work was that multi-sector partnerships, though challenging, create value for all parties and have an important role in addressing disadvantage.

Our work in The Agora illustrated that philanthropy is uniquely placed to build partnerships with the community sector, government and the corporate world.

The Community, Government and Corporate sectors each bring a particular mindset and set of assumptions to the brokering of such partnerships. The solution to the problem rarely lies within the skill set and knowledge of any one sector. Instead it relies on a collaborative partnership model which leverages knowledge, logistics and resources to address the issue and frame the project or model in such a way that each sector has a commitment to working collaboratively to generate the solution.

During the past year the Trust has played a role in cultivating these conversations, in building this neutral space and in brokering projects which foster such collaborative partnerships. A number of our grants over the course of this year have assisted in the scoping of such projects.

Finally, the Trust would like to acknowledge and thank all the grant applicants who have worked with us over the year. Your willingness to take us on your journeys, to share the knowledge and insight of your organisations is absolutely fundamental to the Helen Macpherson Smith Trust's capacity to make a difference.

## Summary of Grants

PROGRAM AREA	2007 \$	2006 \$
Aged Care	410,830	180,395
Arts, Culture & Heritage	449,925	741,393
Community Support	1,946,664	933,570
Disability Care & Support	438,558	833,087
Education	240,100	248,000
Employment & Vocational Training	247,500	480,000
Environment	99,500	239,388
Health	1,008,349	1,226,593
TOTAL GRANTS APPROVED 2006-2007	4,841,426	4,882,426
LESS GRANTS APPROVED IN PREVIOUS FINANCIAL YEARS AND GRANTS AMENDED	(441,910)	(233,357)
TOTAL GRANTS IN FINANCIAL STATEMENTS OF THIS ANNUAL REPORT	4,399,516	4,649,069

# Aged Care

BEOLITE  
VILLAGE  
PROJECT

“

*The majority of these are widows or widowers,  
many living alone some distance from towns.*

*Accommodation for these aged people is  
becoming a major issue, particularly with  
the general population living longer.*

”

# Beolite Village

\$200,000 FOR THE BEOLITE VILLAGE PROJECT

9

**A vision of a secure, safe and worry-free environment for the rural elderly, with access to emergency, medical and town services is the inspiration behind the Beolite Village project.**

Initiated by Sir Andrew Grimwade, with the support of the Mansfield District Hospital, Beolite Village seeks to address the emerging crisis in the provision of housing for the aged, specifically in rural Victoria and in remote areas of the state's north-east.

It is estimated that within the High Country, there are currently some 600 people aged over 80 years of age, of whom 300 people are aged over 85 years of age. The majority of these are widows or widowers, many living alone some distance from towns. Accommodation for these aged people is becoming a major issue, particularly with the general population living longer.

With the aim of constructing and operating 200 independent living homes in the form of a village, the Beolite Village will provide high quality, independent living accommodation for the relief of the aged, the disadvantaged, those in straitened circumstances, and for people unable to continue living alone, particularly those in isolated communities.

Named after Beolite, the highly respected Aboriginal Chief of the whole of the Upper Goulburn tribes at the time of European settlement in the area, the project has developed a financial model that will ensure financial and operational sustainability after its initial establishment period. Its plans are based upon the construction and operation of 10-12 homes each year, with sufficient land to allow for the continued expansion of accommodation over the next 20 years.

It is intended that the Village will be eco-sensitive, with priority being given to water conservation and recycling, use of solar energy, energy conservation, and reafforestation.

In 2006, a grant of \$200,000, payable over two years, from the Helen Macpherson Smith Trust was the catalyst for a successful start to a fundraising campaign to enable the project to proceed. Early in 2007, after consideration of a number of possible sites, an area of 46 acres of land was secured on the Maroondah Highway at the entrance to Mansfield, close to town services. Subject to the necessary approvals, construction of the first cluster of homes is expected to start in 2008.

As possibly the best measurement of the pressing need being addressed by the project, the Beolite Village project has already received strong community support, with over 150 expressions of interest received from potential residents enquiring about future residency.

[www.beolitevillage.org](http://www.beolitevillage.org)



Site from NE Corner



Village View to East.



Future Entrance from East

## Grants to Aged Care

\$410,830

### Aged & Community Care Victoria

[www.accv.com.au](http://www.accv.com.au)

Development of the Best Practice Model

\$40,030

\$275,000 total commitment paid over three years 2005-2007

### Australian Polish Community Services Inc

[www.apcs.org.au](http://www.apcs.org.au)

Purchase of a Community Bus

\$20,000

### Beolite Village Limited

[www.beolitevillage.org](http://www.beolitevillage.org)

Establishment of Beolite Village, an aged care hostel in Mansfield

\$100,000

\$200,000 total commitment paid over two years in 2007 & 2008

### Chaffey Aged Care

[www.chaffeyagedcare.com.au](http://www.chaffeyagedcare.com.au)

Capital Appeal for the Chaffey Aged Care Hostel

\$20,000

### Dutch Care Ltd

[www.dutchcare.com.au](http://www.dutchcare.com.au)

Redevelopment and expansion of Kilsyth Nursing Home

\$20,000

### Edgarley Home Incorporated

Upgrade aged care facility

\$20,000

### Eva Tilley Memorial Home Inc.

Contribution towards redevelopment of aged care facilities

\$20,000

### Havilah Hostel Inc

Development of a 20 bed Dementia Specific Unit

\$20,000

### Helping Hand Foundation Inc

Elderly Home Assistance Program

\$5,000

### Mirboo North Community Care Inc.

Redevelopment of residential aged care facility

\$20,000

### Monash University, Aged Mental Health Research Unit

[www.monash.edu.au](http://www.monash.edu.au)

Antidepressant use in nursing homes: A longitudinal investigation.

\$7,000

### Nazareth House

Purchase of equipment to access bore water

\$6,800

### Russian Welfare Society Inc

Respite Care and Services Facility Project

\$20,000

### St Vincent de Paul Society Victoria Inc

[www.svdv-vic.org.au](http://www.svdv-vic.org.au)

Purchase of electric beds (\$2,200 each) for new aged care facility 'Hamlyn Heights' in Geelong for disadvantaged frail elderly residents, currently under construction

\$22,000

### Vasey RSL Care Ltd (VRSLC)

[www.vaseyrslcare.org.au](http://www.vaseyrslcare.org.au)

Replacement Beds for Wattle Lodge Hostel, Brighton

\$20,000

### Wintringham

Eunice Seddon Home — support to build a 60 bed nursing home for homeless people in Dandenong

\$60,000

# Arts, Culture & Heritage

VICTORIAN  
TAPESTRY  
WORKSHOP

“

*I spent three months at the RMH, immersing myself in the day and night activities of staff – medical and administrative, from the CEO to patients and visitors. I was privileged to be trusted with people’s stories.*

”

# Victorian Tapestry Workshop

\$50,000 FOR THE HEALING THREADS TAPESTRY

12

Since time immemorial, it has been acknowledged that art has the ability to lift us out of ourselves, to transform, educate and heal.

Today, current international research confirms the many benefits which derive from the presence of works of art and the involvement of artists with public health institutions.

[www.victapestry.com.au](http://www.victapestry.com.au)



Artist-in-Residence and  
Healing Threads tapestry  
designer Merrin Eirth



The Healing Threads  
Tapestry design

This belief in the significant and positive benefits of art is the driving force behind the Healing Threads project, the result of a partnership between the Victorian Tapestry Workshop, Melbourne Health and the Victorian College of the Arts (VCA).

In 2006, the VCA's Head of Drawing, Merrin Eirth, undertook a four month residency at the Royal Melbourne Hospital. The outcome of that residency is the marvellous design for the large scale tapestry completed in July 2007. Measuring 2 x 4 metres, it is a splendid and enduring feature of the newly developed foyer at the Royal Melbourne Hospital.

Says Merrin: "I spent three months at the RMH, immersing myself in the day and night activities of staff – medical and administrative, from the CEO to patients and visitors. I was privileged to be trusted with people's stories." Merrin has enjoyed the collaboration with weavers Chris Cochi, Louise King, Rebecca Moulton and Emma Sulzer as they worked at the loom. "My background as a weaver means that I know what the weavers can do and the way the colours vibrate. I want the tapestry to have flat, reflective and absorbing qualities. I think we have achieved this by using a number of materials: the beautiful wools, combined with cotton and embroidery thread give the tapestry its rich depth and a sense of contemplation."

The tapestry is the second Delacombe tapestry, the series named in honour of Lady Delacombe, who was instrumental in the establishment of the Victorian Tapestry Workshop in 1976 and whose championship of the concept of an Australian workshop was a key to support by government and the philanthropic sector for the Victorian Tapestry Workshop.

The project aims to create a lasting artwork for the Royal Melbourne Hospital, which will engage staff, patients and families, reinforcing the importance of art in a healing environment. The therapeutic value of works of art to patients and the wider hospital community cannot be overstated, and in recognition of this, the Helen Macpherson Smith Trust made a grant of \$50,000 towards the project.

The Victorian Tapestry Workshop is the world's leading contemporary tapestry studio and its hallmark is the collaborative approach taken between the artists and weavers to produce outstanding contemporary tapestries. The Healing Threads tapestry is a testament to this approach. Approximately 80% of the Workshop's production is based on commissions it receives from both public and private clients, with a further 20% committed to the development of its own Exhibition Collection. The Workshop depends on large-scale tapestry commissions for its continued sustainability and operates in the not-for-profit sector, receiving triennial funding from Arts Victoria.



# The Cunningham Dax Collection at the Mental Health Research Institute of Victoria

\$80,000 TO MAKE THE CUNNINGHAM DAX COLLECTION MORE ACCESSIBLE

13

The link between creativity, mental illness and art has been noted for generations — just think of Vincent Van Gogh, one of the world's greatest artists. Yet understanding mental illness is often extremely hard for the average person.

In recent years an increasing number of people from the general community have found a visit to the Cunningham Dax Collection to be an accessible and non-threatening way of understanding the experience of trauma and mental illness. During visits to the Collection, many people have commented on how the artworks helped them gain a more sympathetic understanding of the suffering of people with trauma and mental illnesses. Many have also commented on the creative abilities that are quite evident in these works.

The Cunningham Dax Collection consists of over twelve thousand creative works by people who have experienced mental illness and/or psychological trauma. This unique Collection is now one of the largest of its kind in the world with only two other collections of similar size and stature, the Musée Art Brut in Lausanne, Switzerland and The Prinzhorn Collection in Heidelberg, Germany. For most of its 60 year history the Collection has had a clinical focus and has been accessible mainly to health care students and professionals. The focus has broadened in recent years and the Collection has developed into an invaluable educational resource.

In 2007, funding from the Helen Macpherson Smith Trust, in partnership with the William Buckland Foundation, the Ian Potter Foundation and the Myer Foundation has allowed the Collection to expand its operations to meet the increased demand from community groups and the education sector. Through the funding of \$80,000 from each trust over two years the Collection aims to move towards a strategic position that will enable the organisation to secure greater government and corporate support. This funding will also enable the Collection to evaluate the effectiveness of its programs through a partnership with the Centre for Program Evaluation at the University of Melbourne.

This is an exciting period for the Collection, as it builds upon strong support from a broad audience including educators, health professionals, students, artists and the general public.

The Collection is continuing to develop its highly successful education program for secondary and tertiary students in a range of disciplines including Psychology, Visual Arts and health care. Most of these students have found the creative works at the Collection to be an interesting and stimulating way of learning about the experience of mental illness. Often for the first time, students are able to ask questions about mental health issues in an environment that is non threatening and to receive information about mental health issues from appropriately qualified staff. The Collection also has an active exhibition touring program, taking works to galleries in regional centres around Victoria and interstate.

The support of the Helen Macpherson Smith Trust allows the Collection to further develop its commitment to making these art works accessible to a diverse audience and promoting an understanding of the symptoms and experience of mental illness, an issue which touches one in five Australians.

[www.cunninghamdax.org.au](http://www.cunninghamdax.org.au)  
[www.mbri.edu.au](http://www.mbri.edu.au)



A group participating in a guided tour of the Collection with Director Dr Eugen Koh



*The horse* (detail)  
 Graeme Doyle, 1971–2005  
 Digital print with ink on canvas  
 108 x 145cm.

## Grants to Arts, Culture & Heritage

\$449,925

### **Bendigo Historical Society Inc.** *www.bendigohistory.com*

Pilot project to scope collection & prepare strategic plan for future action

\$10,000

### **Casterton & District Historical Society**

*www.ballaratgenealogy.org.au/casterton/historicalsociety.htm*

Blinds for the Museum

\$2,500

### **Chamber Music Australia**

*www.chambermusicaustralia.com.au*

Present Masterclasses as part of upcoming 5th Melbourne International Chamber Music Competition.

\$25,000

### **Gertrude Contemporary Art Spaces**

*www.gertrude.org.au*

2007 Forum Series

\$2,500

### **Linden — Centre for Contemporary Arts**

*www.lindenarts.org*

This Crazy Love – the installation

\$2,500

### **Malthouse Theatre**

*www.malthousetheatre.com.au*

Tower Theatre Program

\$50,000

\$175,000 total commitment paid over three years 2006-2008

### **Melba Foundation Limited**

*www.melbafoundation.org*

'Helene' – Production of a world premier recording featuring Orchestra Victoria

\$10,000

### **Melbourne Workers Theatre**

*www.melbourneworkerstheatre.com*

Contribution towards production costs of 'The Call'

\$2,500

### **The Mental Health Research Institute of Victoria**

*www.mhri.edu.au*

Support the implementation of a strategic review of the Cunningham Dax Collection

\$40,000

\$80,000 total commitment paid over two years 2007 & 2008

### **The National Theatre, St Kilda)**

*www.nationaltheatre.org.au*

Support for the Community Access Program

\$5,000

\$15,000 total commitment paid over three years 2005-2007

### **Regional Arts Victoria**

*www.rav.net.au*

Fresh & Salty – a state-wide arts project exploring the issue of water in five regional Victorian communities

\$20,000

### **State Library of Victoria Foundation**

*www.slv.vic.gov.au*

Digitisation of significant regional newspapers

\$50,000

\$150,000 total commitment paid over three years 2006-2008

### **St Mark's Anglican Church**

*www.stmarkscamberwell.org.au*

\$200,000 in 200 days Campaign – Restoring the Church

\$5,000

### **Theatre @ Risk**

*www.theatreatrisk.com*

2007 Season of Theatre productions

\$5,000

### **Uniting Church in Australia**

Centre for Theology and Ministry Project

\$105,000

\$210,000 total commitment paid over two years 2007 & 2008

### **University Of Melbourne**

*www.unimelb.edu.au*

Contribution towards publication costs of colour illustrations in book: *Aboriginal Art: Creativity and Assimilation*

\$6,000

### **University Of Melbourne**

*www.unimelb.edu.au*

3-D Digital Access Project

\$18,925

### **University Of Melbourne**

*www.unimelb.edu.au*

Contribution towards cost of bringing keynote speakers to the 32nd Congress of the International Committee of the History of Art to be hosted by University of Melbourne

\$20,000

### **Victorian Music Library**

*http://home.vicnet.net.au/~vml/*

To support capacity building of the organisation

\$10,000

### **Victorian Tapestry Workshop**

*www.victapestry.com.au*

Healing Threads Project

\$50,000

### **Western Edge Youth Arts Inc**

*www.westernedge.org.au*

Chicks Theatre Lab – theatre workshops and production of 'Excavations'.

\$10,000

# Community Support

BUNDJI  
BUNDJI

“

*The grant... will enable the Elder to continue travelling alongside young people like John, providing advocacy in courts, visits when in Youth Justice centres and support in the community.*

”

# Bundji Bundji

\$25,000 FOR OUTREACH SERVICE FOR INDIGENOUS YOUNG IN JUVENILE JUSTICE

16

**The overrepresentation of indigenous young people in the Youth Justice System has led to the formation of Bundji Bundji, an innovative partnership between Narana Aboriginal Cultural Centre, Maya Living Free Healing Association and Whitelion.**

[www.whitelion.asn.au](http://www.whitelion.asn.au)



Bundji Elder Uncle Lester.

Its mission is to empower indigenous young people by providing culturally appropriate support and advocacy, and facilitating a sense of identity through spiritual, cultural and community reconnection.

Bundji Bundji supports an Indigenous Elder to provide outreach support to youth and young men aged 10-21 years who are in custody, serving community based orders or who are 'at risk' of entering the Youth Justice System. Bundji Bundji realises that the best way to assist this group is through a collaborative partnership which shares resources and knowledge to provide consistent, supportive and culturally relevant opportunities to young people.

The young people involved with Bundji Bundji are amongst the most disadvantaged in the state. They often have high levels of drug dependency, mental illness, a history of abuse and low literacy and numeracy skills. Many come from families that have experienced multigenerational institutionalisation and trauma, as well as unemployment and financial difficulties. Homelessness and transience is a major issue with a considerable number moving between urban and rural settings.

Many have no positively influential people to assist them in leading a productive life normally available to other young people through school, sporting clubs or extended family. As adolescents, these young people are at a crucial stage where this behaviour will become a lifestyle unless they can develop new positive patterns.

The young people who come into contact with Bundji Bundji are so highly marginalised that their sense of self and connection to community has often dissolved away. This was the case for one young man, John, who had suffered such extensive abuse and trauma that he felt safest in a Youth Justice Centre and had little hope for the future.

The Bundji Bundji Elder visited John on a weekly basis while he was in detention. Over time John was able to trust this connection and began to plan for his release. He visited the Maya Centre on a day release and met a Whitelion employment worker to discuss job opportunities. When he was released he continued to spend time with the Elder and visited Narana Creations in Geelong for a BBQ and playing didgeridoo with a musician at the centre. John is now focused on his future and hopes to start work soon.

The grant of \$25,000 from the Helen Macpherson Smith Trust will enable the Elder to continue travelling alongside young people like John, providing advocacy in courts, visits when in Youth Justice centres and support in the community. By providing consistent, stable and trusting relationships Bundji Bundji hopes to continue providing young men with the opportunity to connect with their community and culture and start to feel strong enough to take on the challenges ahead.

# Odyssey House Victoria

\$75,000 FOR THE ECLIPSE PROJECT

17

**Mental health and substance-use disorders often go hand-in-hand, yet people with these co-existing conditions frequently experience poorer treatment outcomes and higher use of mental health and alcohol and other drug treatment services.**

Odyssey House Victoria, in partnership with La Trobe University and NEXUS (Northern Dual Diagnosis), is developing The Eclipse Project, a twelve month initiative to improve treatment outcomes for individuals who experience both substance use and mental health problems.

Historically, mental health and substance use services have been provided separately, often resulting in clients experiencing multiple referrals or being deemed ineligible for services, and consequently missing out on treatment due to these gaps. Through the increasing awareness of the existence of people with dual disorders, a growing number of concerned organisations and professionals have called for the adaptation of treatment to better meet the special needs of these individuals.

While some Government funding has been allocated towards improving services for 'dually diagnosed' individuals, a number of gaps persist in the ability of drug and alcohol treatment agencies to provide an effective treatment response that translates into a generalised improvement in outcomes.

In response, The Eclipse Project aims to address these gaps by:

- Providing clinical intervention and appropriate referrals to individuals who have a 'dual diagnosis', in order to improve their health and treatment outcomes.
- Improving the skills of clinicians at Odyssey's Community Services, so as to enhance the effectiveness of Odyssey in the provision of care and treatment to people who have

co-existing mental health and drug and alcohol problems.

- Piloting a cost effective service enhancement model that has the potential to be adopted across a range of settings.

Project activities will include developing a response for clients that combine an integrated and parallel model of treatment. Parallel treatment is when the client participates in two systems simultaneously and integrated treatment is when the client participates in a single unified and comprehensive treatment program for dual disorders. The two primary activities of the project will be: 1) The implementation of an appropriate mental health assessment tool, to improve identification of specific mental illness, and to train staff in its implementation and interpretation; and 2) Increase the staff's capacity to provide both mental health and addiction treatment in a unified and comprehensive program through training opportunities, develop links with mental health service providers and identify appropriate referral pathways and shared client planning for those with particularly complex needs.

The Eclipse Project will report on the effects of implemented changes and make recommendations to policy and practice to ensure sustainability of effective responses beyond the life of the project. The aim of the project is to implement any change in such a manner that allows it to be embedded in treatment as usual, ultimately improving outcomes for Odyssey clients.

[www.odyssey.org.au](http://www.odyssey.org.au)

# Macpherson Smith Community Alliance

\$250,000 (\$1,000,000 TOTAL OVER FOUR YEARS)

18

The Macpherson Smith Community Alliance was originally launched in May 2004 as a jointly funded \$1 million initiative between the Victorian State Government and the Helen Macpherson Smith Trust to support projects identified by the Community Capacity Building Initiative. The initiative was founded on the important understanding that local people play a critical role in building the capacity of their communities, through their motivation, vision, energy and commitment.

<http://msca.hmstrust.org.au>



Peter Batchelor, Minister for Planning and Community Development and Frances Awcock, Trustee for the Helen Macpherson Smith Trust at the launch of the Macpherson Smith Community Alliance at Portarlington, 4 October 2007

The project aimed to build people capacity in local key people and to empower them to build relationships between existing organisations and people in the community, develop the community, enhance the local economy, and involve outside organisations where there were skill gaps. The Alliance proved to be an extremely successful partnership involving more than 55 small towns in regional Victoria.

In June 2007, representatives of the Helen Macpherson Smith Trust and the Department for Planning and Community Development signed a joint agreement for a new \$2 million second stage of the Macpherson Smith Community Alliance scheduled to run for four years.

The Macpherson Smith Community Alliance will build on the successful Community Building Initiative (CBI), which is tapping into the skills and resources of towns across Victoria to manage and adapt to change, and create thriving communities. The grants will provide assistance towards funding CBI project outcomes that have been identified by the rural communities through their community planning process.

Communities participating in CBI have held Community Opportunity Workshops to identify and develop a shared vision for the future of the community. Out of these discussions a number of prioritised projects and activities have been identified to bring their goals to fruition. These include:

- Building community/community infrastructure and technology
- Education, employment, training and transition
- Innovative community transport solutions
- Environmental initiatives
- Youth voice and leadership
- Ageing in place
- Community events/civic engagement

This \$2 million partnership has been developed to provide not only seed funding for projects, but also to be a catalyst for building new partnerships within and across communities, organisations and government. We also understand the particular challenges that drought and bushfire presents for rural communities, and the consideration needed to develop community resilience.

By using these funds as a basis to leverage support, there are opportunities for communities to explore new connections involving collaboration between business, organisations and government to achieve their community project goals.



## Grants to Community Support

\$1,946,664

### The ALSO Foundation

[www.also.org.au](http://www.also.org.au)

'Behind Closed Bars' project

\$5,000

### Australian Red Cross Victoria

[www.redcross.org.au](http://www.redcross.org.au)

Patient Transport Service

\$15,000

### Berry Street Inc

[www.berrystreet.org.au](http://www.berrystreet.org.au)

Gippsland Wilderness Program

\$20,000

### Box Hill Citizens Advice Bureau

[www.ourcommunity.com.au/boxhillcab](http://www.ourcommunity.com.au/boxhillcab)

Emergency Relief

\$5,000

### Brophy Family and Youth Services Inc

[www.brophy.org.au](http://www.brophy.org.au)

South West Mentoring Regional Coordination Project: Youth Mentoring

\$120,000

### Bundji Bundji Partnership

[www.whitelion.asn.au](http://www.whitelion.asn.au)

Bundji Bundji Partnership – culturally appropriate outreach support service for Indigenous young people involved in the Juvenile Justice system.

\$25,000

### Cottage By The Sea Queenscliff Inc

[www.cottagebythesea.com.au](http://www.cottagebythesea.com.au)

Holiday Camp Costs

\$2,000

### Council For Christian Education In Schools

[www.cces.org.au](http://www.cces.org.au)

New accounting system

\$25,000

### Court Network

[www.courtnetwork.com.au](http://www.courtnetwork.com.au)

Remote Access: Piloting the Availability of Court Network Support in outlying Remote Victorian Courts

\$25,000

### Emma House Domestic Violence Services

VAWIS Capacity Building Project

\$10,000

### Emma House Domestic Violence Services

The Multi-Agency Risk Assessment & Management Project (MARAM)

\$40,000

### Family Life

[www.familylife.com.au](http://www.familylife.com.au)

Capacity Building for community Service Organisations - From innovation to enterprise

\$60,000

### Federation of Community Legal Centres (Vic)

[www.communitylaw.org.au](http://www.communitylaw.org.au)

Family Violence Court Support Best Practice Project Stage 2

\$15,155

### Footscray Community Legal Centre Inc

[www.communitylaw.org.au/footscray](http://www.communitylaw.org.au/footscray)

Contribution to participate in the VOCAT Family Assistance Project

\$6,000

### Gippsland Women's Health Service Inc

[www.gwhealth.asn.au](http://www.gwhealth.asn.au)

Upgrade of library resources: video & audio tapes to DVD & CD formats

\$2,182

### Hanover Welfare Services

[www.hanover.org.au](http://www.hanover.org.au)

Research Project: Evidence-Informed Care Management Practice for Homeless Persons Agencies

\$100,000

### The Haven Foundation

[www.havenfoundation.com](http://www.havenfoundation.com)

Refurbishment of former convent to provide supported housing for singles with a mental illness

\$100,000

### HomeGround Services

[www.homeground.org.au](http://www.homeground.org.au)

Finding A Way Home pilot project

\$35,000

### Hotham Mission Asylum Seeker Project

[www.hothammission.org.au](http://www.hothammission.org.au)

Basic Living Assistance Program

\$10,000

### Interfaith Network Inc City of Greater Dandenong

Funding to conduct a feasibility study into the establishment of FAITHWORKS, an inter-faith initiative to build community & harmony through mutual understanding of different cultures & faiths

\$19,775

**Life Education Victoria**[www.lifeeducation.org.au](http://www.lifeeducation.org.au)

Evaluation of the Life Education Family Forum (PAKT) program

\$25,000

**Lost Dogs' Home**[www.dogshome.com](http://www.dogshome.com)

Thelma Hoult Training and Education and Centre Project

\$25,000

**MacKillop Family Services Ltd**[www.mackillop.org.au](http://www.mackillop.org.au)

Feasibility study for larger project – Benchmarking in the Community Services Sector

\$10,000

**Macpherson Smith Community Alliance**<http://msca.hmstrust.org.au>

A four-year joint partnership between the Helen Macpherson Smith Trust and the Department of Planning and Community Development to enhance the Community Building Initiative (CBI) across rural and regional Victoria

\$250,000 for first year

**Melbourne Citymission Inc**[www.mmelbournecitymission.org.au](http://www.mmelbournecitymission.org.au)

Agora Think Tank Conference: Leaders, Ideas &amp; Partnerships

\$20,000

**The Micah Law Centre**[www.micahlaw.org.au](http://www.micahlaw.org.au)

VOCAT (Victims of Crime Assistance Tribunal) Family Assistance Project

\$25,000

**Murdoch Childrens Research Institute**[www.mcri.edu.au](http://www.mcri.edu.au)

Scoping for the Out of Home Care Project

\$10,000

**North East Support and Action for Youth Inc. (NESAY)**

Hume Region Mentoring Project: Youth Mentoring

\$120,000

**Odyssey House Victoria**[www.odyssey.org.au](http://www.odyssey.org.au)

The Eclipse Project – Dual Diagnosis: Increasing Mental Health Capacity Project

\$75,000

**Open House Christian Involvement Centres**

Coffee Club: weekly meeting for at-risk teenage girls

\$1,000

**Public Interest Law Clearing House (PILCH)**[www.pilch.org.au](http://www.pilch.org.au)

Funding to ensure viability of the Consumer Advisory Group for the PILCH Homeless Persons' Legal Clinic

\$35,752

**Project Respect**[www.projectrespect.org.au](http://www.projectrespect.org.au)

Pathways Project: develop a model for education and employment services and other support services appropriate to women in the sex industry who are currently unable to access such services

\$10,000

**Project Respect**[www.projectrespect.org.au](http://www.projectrespect.org.au)

Stage 4 Pathways Project: Pilot Implementation following successful scoping project for women wishing to leave the sex industry

\$63,000

**The Salvation Army**[www.salvationarmy.org.au](http://www.salvationarmy.org.au)

Strategic plan for Project 614

\$25,000

**Save The Children Victoria**[www.savethechildren.net/australia](http://www.savethechildren.net/australia)

Breakfast Nutrition Program

\$5,000

**Spectrum Migrant Resource Centre**[www.spectrumvic.org.au](http://www.spectrumvic.org.au)

'Raising Mental Health Awareness in Refugee Communities – Immunise Yourself to Ensure Good Mental Health' Program

\$50,000

**St Kilda Gatehouse Inc**

Strategic Review Outcomes Project: assistance with implementation of recommendations from strategic review

\$10,000

**St Kilda Police & Citizens Youth Club Inc**

Youth Leadership Camp Program 2007

\$5,000

**St Luke's Anglicare**[www.stlukes.org.au](http://www.stlukes.org.au)

Loddon Mallee Mentoring Regional Co-ordination Project: Youth Mentoring

\$120,000

**St Paul's Drug Prevention, Rehabilitation and Aftercare Program**

Drug rehabilitation program

\$5,000

**St. Liborius Primary School Community Tennis Pavilion**

\$5,000

**Stepfamily Association of Victoria Inc**

[www.stepfamily.org.au](http://www.stepfamily.org.au)

External Evaluation of Stepfamily Education and Training Programs

\$22,000

**Stephanie Alexander Kitchen Garden Foundation**

[www.kitchengardenfoundation.org.au](http://www.kitchengardenfoundation.org.au)

Evaluation of the Stephanie Alexander Kitchen Garden Project

\$35,000

**Travellers' Aid Society of Victoria**

[www.travellersaid.org.au](http://www.travellersaid.org.au)

Evaluation of TASV's organisational structure, programs, effectiveness and service delivery

\$20,000

\$40,000 total commitment paid over two years 2007 & 2008)

**University Of Melbourne**

[www.unimelb.edu.au](http://www.unimelb.edu.au)

Partnerships between Governments and Communities: What have we learned and how do we move forward?

\$11,200

**Upper Hume Community Health Service Inc**

[www.uhcbs.vic.gov.au](http://www.uhcbs.vic.gov.au)

Young Person's Advocate-HighWater Theatre Project

\$40,000

**Upper Murray Family Care Inc**

[www.umfc.com.au](http://www.umfc.com.au)

Wodonga Family Centre

\$25,000

**Urban Seed**

[www.urbanseed.org](http://www.urbanseed.org)

Operations of the Credo Cafe

\$10,000

**Victorian Council of Social Services**

[www.vcss.org.au](http://www.vcss.org.au)

VCSS CEO and Presidents' Leadership Program

\$20,000

**Victorian Council of Social Services**

[www.vcss.org.au](http://www.vcss.org.au)

Utilities Policy and Advocacy Officer

\$30,000

**Victorian Council of Social Services**

[www.vcss.org.au](http://www.vcss.org.au)

Communications Capacity Building Workshop for the community sector in Victoria

\$7,500

**Victorian Immigrant & Refugee Women's Coalition**

[www.virwc.org.au](http://www.virwc.org.au)

Purchase of computers and printer

\$3,600

**Victorian Youth Mentoring Alliance**

[www.youthmentoringvic.org.au](http://www.youthmentoringvic.org.au)

Establishment capacity support

\$50,000

**Waverley Emergency Adolescent Care**

[www.weac.org.au](http://www.weac.org.au)

Assistance to develop 2-year pilot program addressing psychosocial needs of young people presenting with complex support needs who currently fall through gaps of existing service system

\$70,000

**Westside Circus Inc**

[www.westsidecircus.com](http://www.westsidecircus.com)

Production of 'Watertight World'

\$10,000

**WISHIN**

(Women's Information Support & Housing in the North)

No Need to Go It Alone Project

\$10,000

**Women's Health Victoria Inc**

[www.whv.org.au](http://www.whv.org.au)

Victorian Gendered Database

\$30,000

**Youth Affairs Council of Victoria (YACVic)**

[www.yacvic.org.au](http://www.yacvic.org.au)

National Youth Affairs

Conference – Are we there yet?

\$10,000

**Youthlaw**

[www.youthlaw.asn.au](http://www.youthlaw.asn.au)

Development of a Children's Rights Monitoring Kit

\$20,000

# Disability Care & Support

BEST  
COMMUNITY  
DEVELOPMENT

“

*It gives the citizens of Ballarat a community enterprise that not only meets their needs by providing a state-of-the-art café and catering service but also provides for the needs of people with a disability, thereby creating a sense of community ownership and involvement.*

”

# BEST Community Development

\$30,000 FOR CAFÉ BEST FIT-OUT

23

Trying to make the transition from school into the workplace can be daunting for anyone, but for those school leavers with a disability the process can look insurmountable. Not so for many in the Ballarat area. A gourmet café and catering service in the heart of Ballarat is actually a supported Employment and Training Service for young people with a disability leaving Ballarat's secondary schools.

BEST Community Development has established Café BEST in the heart of Ballarat's CBD, an exciting and viable business which prioritises the provision of employment, training and transition opportunities for young adults with special needs. At the same time it gives the citizens of Ballarat a community enterprise that not only meets their needs by providing a state-of-the-art café and catering service but also provides for the needs of people with a disability, thereby creating a sense of community ownership and involvement.

Aided by a \$30,000 grant from the Helen Macpherson Smith Trust, BEST Community Development has renovated a property in the heart of the city and created a professional, competitive and efficient community enterprise that assists people with special needs to pursue individual lifestyles as independent, respected adults working within their local community. Café BEST is already proving a success and is being embraced by the local businesses and the Ballarat community.

The project seeks to establish a best practice model in both provision of employment, training and transition opportunities for people with special needs, the goals will include:

- Creating a range of innovative employment opportunities for adults with special needs
- Providing quality products and service in a caring work environment
- Facilitating 'best practice' models that integrate people with special needs into a business environment

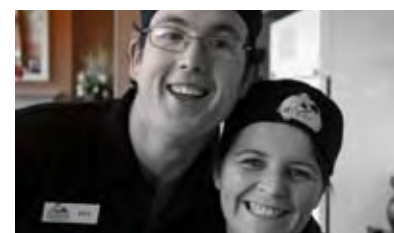
BEST's philosophy is to provide a safe, innovative and secure working environment to encourage people with disabilities to reach their full potential. It aims to integrate participants into the Ballarat workforce and to create a long term solution to unemployment among the disabled and to promote a greater understanding by encouraging local businesses and the community to support this unique venture. In achieving this, it hopes to strengthen the links to employment opportunities and help to change negative perceptions held by many employers and other members of the community.

Café BEST is a wonderful example of partnerships in funding to achieve outstanding outcomes for employment and training for people with disability.

[www.bestcd.org.au](http://www.bestcd.org.au)



Ben – an exceptional young man with a black belt in Karate and a great smile



Ben and Kym

## Grants to Disability Care & Support

\$438,558

**Action for Community Living**  
[www.advocacyhouse.org/acl/about.html](http://www.advocacyhouse.org/acl/about.html)  
 Disability Employment in the Disability Services Sector in Victoria Research Project  
 \$7,275

**The Australian Friendship Circle Inc**  
[www.friendshipcircle.org.au](http://www.friendshipcircle.org.au)  
 Disability Inclusion Programs - Centre establishment, Week End Respite Program and Day Camps  
 \$5,300

**Bayley House**  
[www.bayleyhouse.org.au](http://www.bayleyhouse.org.au)  
 Development of a Transition Unit  
 \$25,000

**BEST Community Development**  
[www.bestcd.org.au](http://www.bestcd.org.au)  
 Cafe Best Gourmet Cafe & Catering Service – an employment & training initiative for young people with a disability – Assistance with purchase of fittings & equipment  
 \$30,000

**Carinya Society**  
 Capital Appeal to upgrade the existing centre at Coburg.  
 \$25,000

**CAUS (Communication Rights Australia)**  
[www.caus.com.au](http://www.caus.com.au)  
 Development, Trial & Implementation of a Human Rights monitoring tool & initial database for people with communication or speech difficulties  
 \$25,000

**Hawthorn Community House Inc**  
[www.hawthorncommunityhouse.vic.edu.au](http://www.hawthorncommunityhouse.vic.edu.au)  
 Me Time for Mums: Improving mood & wellbeing in mothers of children with a disability through a community leisure education program  
 \$2,695

**Impact Leisure Association Inc**  
[www.impact.vic.edu.au](http://www.impact.vic.edu.au)  
 Homes in Communities Project  
 \$30,000

**Karkana Support Services Inc**  
[www.karkana.org.au](http://www.karkana.org.au)  
 Contribution towards installation of water bore & desalination plant for market garden  
 \$25,000

**Marillac House Limited**  
[www.marillac.com.au](http://www.marillac.com.au)  
 Establish Neighbourhood Connections Group in Frankston and undertake and evaluation of the Neighbourhood Connection model  
 \$60,000

**McGregor House**  
 Contribution towards costs to take a team of athletes to the TRI State Games in Mildura November 2008  
 \$6,000

**McGregor House**  
 Install overhead lifting system in exercise room, change room and bathroom  
 \$13,893

**Muscular Dystrophy Association Inc**  
[www.mda.org.au](http://www.mda.org.au)  
 Research Project: Service analysis and economic impact study of the Muscular Dystrophy community within Victoria  
 \$25,000

**Oakleigh Centre**  
[www.oakleighcentre.org](http://www.oakleighcentre.org)  
 Contribution towards the cost of building a Community Centre  
 \$30,000

**Riding for the Disabled Association of Victoria Inc.**  
[www.rdav.asn.au](http://www.rdav.asn.au)  
 Medical Support for RDA Centres  
 \$15,000

**Scope (Vic) Ltd**  
[www.scopevic.org.au](http://www.scopevic.org.au)  
 Outcomes measures project – scoping  
 \$7,500

**Statewide Autistic Services Inc**  
[www.sasi.org.au](http://www.sasi.org.au)  
 Equip & install a small horticulture centre as part of new facilities  
 \$16,895

**Waverley Industries Limited**  
[www.wavind.org](http://www.wavind.org)  
 Expand current building and upgrade facilities  
 \$25,000

**Woodbine**  
[www.woodbine.org.au](http://www.woodbine.org.au)  
 Purchase & installation of a hydraulic wheelchair lift for commuter bus for prematurely frail clients  
 \$10,000



# Education

NATIONAL  
EXHIBITIONS  
TOURING SUPPORT  
(NETS) VICTORIA

“

*We are delighted and honoured to partner with both the Helen Macpherson Smith Trust and ACMI to deliver such an important professional development opportunity for teachers in regional Victoria.*

*This special education program will not only bridge the gap in media art skills – it has the potential to inspire a new generation of artists when the teachers return to their classrooms.*

”

# National Exhibitions Touring Support (NETS) Victoria

\$10,000 FOR A MEDIA ART EDUCATION PROGRAM FOR REGIONAL VICTORIA

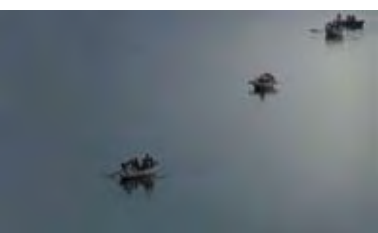
26

In June 2007 the Helen Macpherson Smith Trust granted NETS Victoria \$10,000 to develop and deliver six media art education programs for regional Victoria in conjunction with the touring exhibition, *Loop: new Australian video art*. This funding has enabled NETS Victoria to partner with the Australian Centre for the Moving Image (ACMI) to implement practical workshops designed to introduce teachers to a range of media art programs and techniques to incorporate into creative arts teaching.

[www.netsvictoria.org](http://www.netsvictoria.org)



Daniel Crooks  
*Static No.9 (a small section of something larger)* 2005.  
Still from DVD.<sup>1</sup>



Jess MacNeil  
*The Shape of Between (detail)* 2006.  
Still from DVD.<sup>2</sup>



Shaun Gladwell  
*Storm Sequence (detail)* 2000.  
Still from DVD.<sup>3</sup>

*Loop: new Australian video art* provides regional audiences with the unique opportunity to access and engage with contemporary video art, which is rarely presented outside of metropolitan art spaces. Curated by Daniel McOwan, the Director of Hamilton Art Gallery, *Loop* showcases the works of five of Australia's most innovative artists creating video art, including Daniel Crooks, Shaun Gladwell, Jess MacNeil, Arlo Mountford and Daniel von Sturmer. In bringing together this group of seemingly diverse artists, this touring exhibition is intended to provide a glimpse into some of the fresh methods being employed in video art today.

The media art education program commenced in October 2007 in Hamilton and will be conducted in 2008 and 2009 in Warrnambool, Horsham, Ararat, Ballarat and Bendigo as *Loop: new Australian video art* tours Victoria. Through hands-on workshops, teachers will investigate the diverse materials, methods and techniques used by the artists featured in *Loop*, including digital stop-motion, distortion and manipulation of the moving image. The education program will provide teachers with the confidence and experience to conduct media-based lessons, thus providing an ongoing benefit to students in regional Victoria. This program will also enable ACMI to extend their reach from metropolitan Melbourne to regional Victoria.

Georgia Cribb, Director of NETS Victoria said, "We are delighted and honoured to partner with both the Helen

Macpherson Smith Trust and ACMI to deliver such an important professional development opportunity for teachers in regional Victoria."

"This special education program will not only bridge the gap in media art skills – it has the potential to inspire a new generation of artists when the teachers return to their classrooms," Ms Cribb explained.

National Exhibitions Touring Support (NETS) Victoria is the peak body for visual arts touring in the state of Victoria. It provides opportunities for regional communities to access and engage with the best contemporary art, craft and design. Working closely with curators and galleries, NETS Victoria develops ambitious and stimulating touring exhibitions that foster the exchange of ideas and promote new works by a diverse range of artists. It also facilitates multiple ways for regional audiences to connect with art through stimulating lifelong learning opportunities.

*Loop: new Australian video art* will tour to Hamilton Art Gallery from 19 September to 28 October 2007; Warrnambool Art Gallery from 26 April to 15 June 2008; Ararat Gallery from 21 June to 27 July 2008; Horsham Regional Art Gallery from 9 September to 2 November 2008; Ballarat Fine Art Gallery from 15 November to 11 January 2009; and Bendigo Art Gallery from 28 March to 26 April 2009.

- 1 Hamilton Art Gallery Collection. Courtesy the artist and Sherman Galleries (Sydney)
- 2 Sound: Marcus Kaiser. Hamilton Art Gallery Collection. Courtesy the artist and Gallery Barry Keldoulis (Sydney)
- 3 Videography: Técha Noble. Sound: Kazumichi Grime. Commissioned by Peter Fay. Courtesy the artist and Sherman Galleries (Sydney)

# Country Education Project

\$65,000 FOR ONLINE EXTENSION PROJECT FOR RURAL SCHOOL STUDENTS

27

**The place of computer technology and the internet in the classroom and whether it enhances the learning experience or is responsible for the “dumbing down” of students is often the focus of articles in the media. One innovative pilot initiative, the E-Kids Rural Express Project, is definitely giving opportunities to young rural school students, which would not be possible without computer technology and the World Wide Web.**

E-Kids Rural Express is an initiative of the Country Education Project Inc and is a result of extensive discussions held with numerous rural and remote individuals and schools over the past two years who were concerned about the access that talented young people had to extension learning. While young people in metropolitan and regional centre schools had such possibilities, young people in rural and remote locations were unable to access such initiatives due to distance and number of students.

The E-Kids Rural Express project is centred on an online classroom that provides a range of challenging activities in maths, science and language as well as an opportunity for talented young people from across rural and remote Victoria to participate in a range of discussion topics through a secure chat room.

Students can participate in the online classroom at anytime during the day using their school or home base regardless of where they are located – the only requirement being that they have access to a computer with access to the internet.

The E-Kids Rural Express project has a number of partners involved including: staff from Country Education Project who provide the overall co-ordination and facilitation of the project; support people; teacher trainees from universities; task setters; the Helen Macpherson Smith Trust; the Department of Education; and Catholic Education Office.

Country Education Project agreed to pilot the project focusing on Year 5 and Year 6 students to determine what interest level there would be for such an initiative. Over 75 students nominated for the pilot project which operated during Term 2 of 2007 with 35 students being accepted to participate.

Mr Phil Brown, CEO of Country Education Project said:

“The overwhelming response in the E-Kids Rural Express project pilot indicates the interest level of schools in rural and remote communities to have access to extension learning opportunities as well as their desire to explore the potential that online learning environments can provide for their students.”

Following a successful pilot project, a further 70 young people from rural and remote Victoria will participate in the project for the remainder of 2007. Both Australian Catholic University and Deakin University will provide approximately 50 teacher trainees providing a mentor role with small groups of students.

The Country Education Project is keen to work with the project partners to further develop the E-Kids Rural Express project and involve other learning areas such as arts, music, technology, philosophy and entrepreneurial thinking. It also hopes that future projects can involve young people from other age groups in providing a broader range of talented young people in challenging learning opportunities.

[www.cep.org.au](http://www.cep.org.au)



Ad Astra – reach for the stars!  
E-Kids training in the WebCT online environment enjoy some face to face time in the big smoke

## Grants to Education

\$240,100

### **Berry Street Inc**

[www.berrystreet.org.au](http://www.berrystreet.org.au)

Gippsland Wilderness Program

\$20,000

### **Save The Children Victoria**

[www.savethechildren.net/australia](http://www.savethechildren.net/australia)

Breakfast Nutrition Program

\$5,000

### **Stephanie Alexander Kitchen Garden Foundation**

[www.kitchengardenfoundation.org.au](http://www.kitchengardenfoundation.org.au)

Evaluation of the Stephanie Alexander Kitchen Garden Project

\$35,000

### **Country Education Project Inc**

[www.cep.org.au](http://www.cep.org.au)

Rural Extended Learning Online

\$65,000

### **Equity Research Centre**

[www.equityresearch.org.au](http://www.equityresearch.org.au)

Gap Analysis of activity around post-compulsory education, training and employment in rural areas.

\$30,000

### **iedirections**

[www.iedirections.com.au](http://www.iedirections.com.au)

Equipment for Adaptive Technology Resource Centre

\$5,100

### **Maribyrnong & Moonee Valley Local Learning and Employment Network**

[www.mmullen.org.au](http://www.mmullen.org.au)

Youth Mentoring Assisted Pathways Program

\$20,000

### **National Exhibitions Touring Support (NETS) Victoria**

[www.netsvictoria.org](http://www.netsvictoria.org)

Media Art Education Program for Regional Victoria

\$10,000

### **River Nile Learning Centre Inc**

Establish Resource Centre/Library for centre which assists Sudanese and Horn of Africa students who had disrupted or no schooling.

\$10,000

### **Youth Affairs Council of Victoria (YACVic)**

[www.yacvic.org.au](http://www.yacvic.org.au)

Research Project: Youth Voice: Navigating the System

\$40,000

# Employment & Vocational Training

BROTHERHOOD  
OF ST LAURENCE

“

*Personal barriers affecting many disadvantaged job seekers are a major impediment to employment and to social inclusion more generally.*

*Project findings concurred with other research in suggesting that individuals facing such severe disadvantage do have the capacity and desire for meaningful participation in society if appropriate support is provided.*

”

# Brotherhood of St Laurence

\$150,000 TO STRENGTHENING THE PERSONAL SUPPORT PROGRAMME

[www.bsl.org.au](http://www.bsl.org.au)

**In these days of so-called full employment there are still people in our society who, for a variety of reasons, are unable to join the workforce and thereby remain among our most disadvantaged, both economically and socially. The Personal Support Programme has been developed to work with job seekers who are considered not ready for mainstream employment services due to the multiple non-vocational or personal barriers they face.**

These barriers may include substance abuse problems, homelessness, mental health problems, domestic violence and social isolation.

Personal barriers affecting many disadvantaged job seekers are a major impediment to employment and to social inclusion more generally. If not adequately addressed, they result in a significantly increased likelihood of staying on welfare - or cycling on and off it - resulting in substantial and ongoing social and economic costs. Facing multiple personal barriers presents an even greater risk and numerous studies have demonstrated that the more barriers an individual faces the lower the likelihood they will exit welfare-to-work and then stay in work. Of further concern is research indicating that welfare recipients facing personal barriers are less able to meet more onerous welfare-to-work requirements and are significantly more likely to be sanctioned, resulting in increased hardship and poverty.

The past decade has seen increasing international recognition that the most disadvantaged job seekers are not well served by mainstream welfare-to-work models based on rapid labour market attachment and minimum cost interventions. This has led to the development of targeted programs, such as the Personal Support Programme, that address personal barriers as well as providing vocational assistance.

The Programme is a collaboration between the Brotherhood, Melbourne Citymission and Hanover Welfare Services and uses a case management model with the aim of supporting increased economic and social participation. In 2006-07 it provided assistance to around 70,000 people. The program provides case management support for each participant over a two year period and is funded by the Department of Employment and Workplace Relations.

In 2003 the Helen Macpherson Smith Trust gave a grant to assess the effectiveness of the Personal Support Programme and identifying critical areas for reform with the express aim of strengthening the Programme. The results showed that the Personal Support Programme is a crucial program delivering essential support to some of the most marginalised unemployed people in Australia. Project findings concurred with other research in suggesting that individuals facing such severe disadvantage do have the capacity and desire for meaningful participation in society if appropriate support is provided. However, it identified key weaknesses in the Programme, in particular the lack of specialist employment assistance and the inability to access services required by clients.

In June 2007, the Trust made a grant of \$150,000 over two years to implement a new stronger model of the Personal Support Programme, developed as a result of the previous research. The project aims to show the considerable benefits of providing intensive and integrated personal and vocational support to unemployed individuals.

The expected outcome is substantially increased participation in employment and education and training as well as improved mental and physical health as a result of reduced social isolation. The results of the project will be used to lobby governments for change to the existing program in order to deliver vastly improved outcomes to severely disadvantaged unemployed people.

## Grants to Employment & Vocational Training

\$247,500

**Bayside Dream Centre Inc**  
[www.baysidechurch.com.au/dreamcentre](http://www.baysidechurch.com.au/dreamcentre)

Training and Educating Communities Project

\$37,500

**Brotherhood of St Laurence**  
[www.bsl.org.au](http://www.bsl.org.au)

Strengthening the Personal Support Program: Achieving Outcomes through Integrated Support

\$150,000

**Disability Employment Action Centre**  
[www.deac.org.au](http://www.deac.org.au)

Two inter-related projects: evaluation framework and development of a sustainable hybrid funding model

\$20,000

\$40,000 total commitment paid over two years 2007 & 2008

**Youth Affairs Council of Victoria (YACVic)**  
[www.yacvic.org.au](http://www.yacvic.org.au)

Youth Voice: Navigating the System

\$40,000



# Environment

DOLPHIN  
RESEARCH  
INSTITUTE

“

*the recent unexplained deaths of five inshore bottlenose dolphins in the Gippsland Lakes highlighted the inadequate understanding of these dolphin populations in Victoria. These events presented an urgent need to increase capacity to efficiently respond to further potential mortalities in the Lakes and to undertake research on the population structure...*

”

# Dolphin Research Institute

\$20,000 FOR RESEARCH INTO THE POPULATION STRUCTURE OF INSHORE DOLPHINS

33

Dolphins must be one of the most loved sea creatures the world over and we are lucky that here in Victoria over half the world's dolphin species can be found around our coast. The Dolphin Research Institute, based at Hastings on Western Port, has been undertaking marine research and providing education and conservation services on these marine mammals for over 15 years.

However, the recent unexplained deaths of five inshore bottlenose dolphins in the Gippsland Lakes highlighted the inadequate understanding of these dolphin populations in Victoria. These events presented an urgent need to increase capacity to efficiently respond to further potential mortalities in the Lakes and to undertake research on the population structure of the inshore dolphins both in the Gippsland Lakes system and Victoria as a whole.

The Dolphin Research Institute approached the Helen Macpherson Smith Trust to support a multidisciplinary study to significantly improve its understanding of the population status and structure of inshore bottlenose dolphins in the Gippsland Lakes, Western Port and Port Phillip.

The project has five key elements:

- To complete analysis and publication of the population data already held by DRI;
- To compare the population genetics of the populations in Port Phillip and the Gippsland Lakes;
- To investigate the impacts of vessel noise on dolphin populations;
- To investigate the ecology of dolphin-prey movements and interactions;
- To investigate the levels of toxins in the tissues of dolphins in Port Phillip and the Gippsland Lakes.

The project will be implemented by the Dolphin Research Institute in partnership with Monash University. Volunteers from the community and several universities will be also involved. The Dolphin Research Institute maintains a unique and close working relationship with the Wildlife section of the Department of Sustainability and Environment. The Trust made a grant of \$20,000 to the Dolphin Research Institute for the study.

[www.dolphinresearch.org.au](http://www.dolphinresearch.org.au)



## Grants to Environment

\$99,500

### Dolphin Research Institute

[www.dolphinresearch.org.au](http://www.dolphinresearch.org.au)

Research Project:

A multidisciplinary investigation of the population dynamics & ecology of bottlenose dolphins in the Gippsland Lakes, Port Phillip & Western Port

\$20,000

### Project Platypus Association Inc

[www.platypus.org.au](http://www.platypus.org.au)

Paddock Trees: The practical preservation of these conservation assets in the Upper Wimmera Catchment

\$79,500

# Health

HOWARD FLOREY  
INSTITUTE

“

*The Howard Florey Institute is Australia's largest brain research organisation. The 2007 grant from the Helen Macpherson Smith Trust, together with those of previous years, has enabled the Florey's scientists to use new, state of the art equipment to accelerate their research into new therapies for debilitating brain diseases.*

”

# Howard Florey Institute

\$60,188 FOR THE PURCHASE OF DIGIGAIT™

35

There are a number of similarities — perhaps more than we'd like to admit — between mouse genes and human genes. A large slice of the genetic information that goes into building a mouse is also needed to put together a human. This is why mice are often employed in the laboratory as our genetic “stunt doubles”. In fact, the similarities between sections of human and mouse DNA enable researchers working with mouse genes to make surprisingly accurate predictions about the location and function of their human counterparts.

[www.florey.edu.au](http://www.florey.edu.au)

Small rodents help Florey scientists in a number of ways, particularly in understanding the function of particular genes. Some of the key areas in which they play a crucial role are stroke, alcohol and other drug addiction, Parkinson's and Huntington's diseases, memory and learning, and epilepsy.

The Howard Florey Institute now has a new, more accurate and reliable way to study the movements of its small rodents — the DigiGait™ automated treadmill and imaging system. Purchased with a grant from the Helen Macpherson Smith Trust, this new system measures every aspect of a mouse or rat's gait from slow speed walking to running. Now, instead of inking the rodent's feet and walking them across graph paper to get gait measurements, our technicians simply place the animals on a clear perspex treadmill which digitally photographs them from underneath.

The advantage of the DigiGait™ system over any other in the world today is that it records a range of parameters and can detect abnormalities in a multitude of measurements such as swing, stride, paw angle and stance. Using these parameters, technicians can measure very small abnormalities that would go undetected by other footprint analysis methods.

The Howard Florey Institute is Australia's largest brain research organisation. The 2007 grant from the Helen Macpherson Smith Trust, together with those of previous years, has enabled the Florey's scientists to use new, state of the art equipment to accelerate their research into new therapies for debilitating brain diseases.



Mr Scott McCue from Mouse Specifics Inc, Boston, USA visited the Florey to install the new DigiGait™ system and train scientists in its use. He is pictured here with Sonia George, a successful Florey Honours student now working with the University of Melbourne's Department of Pathology.

# The Jean Hailes Foundation for Women's Health

\$50,000 FOR RESEARCH INTO POLYCYSTIC OVARY SYNDROME

36

[www.jeanhailes.org.au](http://www.jeanhailes.org.au)

**The way we think and feel about health influences physical and psychological wellbeing, risk of further health problems and even mortality. We know that increased information and awareness amongst those affected by illness, particularly those facing years of chronic disease, reduces stress and depression and improves self-esteem and adherence to recommended therapy. It is becoming increasingly clear that in order to understand the impact of disease and treat the whole person it is important to understand both physical and emotional wellbeing.**

This project aims to adopt a holistic approach to better managing chronic disease in women through investigating the psychological aspects of a common endocrine disorder – Polycystic Ovary Syndrome (PCOS). Very little research to date has considered the psychological impact of women with PCOS. Most have focused on the biological and physiological aspects of the syndrome.

Up to 10 per cent of women are affected by PCOS. These women have one or more of a combination of symptoms including high levels of androgen hormones, acne, excess body and facial hair, scalp balding, obesity and menstrual irregularities. In addition, it is the most common form of anovulatory infertility and once pregnant these women have higher risks of pregnancy related diabetes and complications. Other important long term implications include a 4 to 7 fold increased risk of diabetes, increased cardiovascular risk factors and potentially increased cardiovascular disease. The primary treatment of this condition involves sustainable lifestyle changes. However, this has proven difficult to achieve and, as a result, more costly medical interventions have evolved.

This new study will look at the psychological aspects of PCOS in women, including depression, anxiety, quality of life, stress, response to illness, self-esteem and self-worth, body image, psycho-sexual function and health

habits. Involving 300 women, the study will include women with PCOS, women experiencing infertility due to PCOS and women who will act as controls (comparison group).

The study will address an important gap in the research related to PCOS. It will provide critical insights into current health behaviours, the barriers to effective translation of prior research on lifestyle changes as well as explore the psychological implications of PCOS itself.

The strength of this project is that this multidisciplinary research will be combined with an educational focus so that findings from the study are then translated into improved clinical care and greater understanding by women in the community about PCOS. Information from the research will form the basis of future awareness, education and support programs for women, health professionals and the general community.

The Jean Hailes Foundation for Women's Health is a national not-for-profit organisation that provides a unique response to the needs of Australian women through excellence in research, community and professional education and clinical care. The key to its work is the seamless translation from research to improved awareness and clinical care.

## Grants to Health

\$1,008,349

### The Alfred Hospital

[www.alfred.org.au](http://www.alfred.org.au)

Burns & Reconstructive  
Operating Theatre  
– The Alfred Centre

\$125,000

\$250,000 total commitment paid  
over two years in 2006 & 2007

### Alzheimer's Disease and Related Disorders Association of Victoria Inc

[www.alzheimers.org.au](http://www.alzheimers.org.au)

Mind your Mind – Phase 2:  
a community health education  
program which focuses on risk  
reduction for dementia

\$125,000

\$250,000 total commitment paid  
over two years in 2006 & 2007

### Anxiety Disorders Association of Victoria

[www.adavic.org.au](http://www.adavic.org.au)

Updated Information Booklet

\$1,600

### AQA Victoria Ltd

[www.aqavic.org.au](http://www.aqavic.org.au)

Back on Track - Information  
services for those who sustain  
spinal cord injuries

\$20,000

### Ballarat District Nursing and Healthcare Inc

[www.bdnb.com.au](http://www.bdnb.com.au)

Purchase of 62 Motion C5 Units  
(Mobile Clinical Assistant PCs)

\$50,000

### Bass Coast Regional Health

[www.bcrh.com.au](http://www.bcrh.com.au)

Purchase of a 24 seat  
community bus for the Bass  
Coast Regional Health  
Volunteer Transport Program

\$10,000

### The Bionic Ear Institute

[www.bionicear.org](http://www.bionicear.org)

The Recognition & Control of  
Epilepsy Seizures Project

\$50,000

### Cure-MS

Purchase MRI Scanner

\$50,000

### Deakin University

[www.deakin.edu.au](http://www.deakin.edu.au)

Making a difference to rural  
children's oral health:  
development of a sustainable,  
integrated prevention and care  
model for rural Victoria

\$49,710

### Fernlea House Inc.

[www.fernlea.com.au](http://www.fernlea.com.au)

Purchase of a car for use by  
those providing palliative care in  
the home as part of the In Home  
Services Project

\$20,000

### Genomic Disorders Research Centre

[www.genomic.unimelb.edu.au](http://www.genomic.unimelb.edu.au)

Human Variome Project

\$50,000

### Howard Florey Institute

[www.florey.edu.au](http://www.florey.edu.au)

Purchase of the DigiGait  
Imaging System

\$60,188

### The Jean Hailes Foundation

[www.jeanhailes.org.au](http://www.jeanhailes.org.au)

Adopting a holistic approach  
to managing chronic disease  
in women – investigating the  
psychological aspects of  
Polycystic Ovary Syndrome

\$50,000

### Knox Community Health Service Inc

[www.kchs.org.au](http://www.kchs.org.au)

Identification of Practice  
Change Models for Improving  
Chronic Disease Care

\$44,709

### La Trobe University

[www.latrobe.edu.au](http://www.latrobe.edu.au)

Health knowledge network  
for consumer engagement

\$43,658

### Lifeline South West (Victoria) Inc

[www.lifeline.org.au/southwestvic](http://www.lifeline.org.au/southwestvic)

After Hours Crisis Support  
Partnership Project

\$22,000

### Monash University

[www.monash.edu.au](http://www.monash.edu.au)

An evaluation of gluten as a  
dietary cause of gastrointestinal  
symptoms in patients who do  
not have coeliac disease.

\$29,400

### Monash University

[www.monash.edu.au](http://www.monash.edu.au)

Support for a Respiratory  
Biopharmaceutics Research  
Laboratory

\$50,000

### Monash University

[www.monash.edu.au](http://www.monash.edu.au)

Survey of hospice and palliative  
care bereavement services in  
Australia

\$47,084

### Prince Henry's Institute

[www.princehenrys.org](http://www.princehenrys.org)

Contribution towards purchase  
of a Protein Fractionation  
System (AKTA purifier)

\$30,000

### SIDS & Kids Victoria

[www.sidsandkids.org](http://www.sidsandkids.org)

Equipment for Training/  
Workshop Room

\$5,000

### St Vincent's Institute of Medical Research

[www.svi.edu.au](http://www.svi.edu.au)

Contribution towards purchase  
of IVIS Spectrum Imaging Unit  
for use in cancer research

\$50,000

### University Of Melbourne

[www.unimelb.edu.au](http://www.unimelb.edu.au)

Tuning in to Kids: Emotionally  
Intelligent Parenting Program

\$25,000

## Investments and Grants: An historical perspective

On her death in 1951, the late Helen Macpherson Schutt left a bequest of £275,000 for the establishment of a charitable trust in perpetuity to benefit all Victorians.

The impact of this lasting legacy from Helen to the people of Victoria is exemplified in a summary of capital growth and grants over the now 55 years of the Trust's operations.

The value of the investment corpus has now grown to approximately \$109 million, as reflected in the following table.

### CORPUS INVESTMENTS

YEAR ENDED JUNE	BOOK VALUE	MARKET VALUE
1952	550	-
1965	1,049	-
1975	3,270	-
1985	8,748	-
1995	23,388	-
2000	41,046	49,700
2001	42,702	58,612
2002	45,610	62,364
2003	53,558	57,834
2004	57,873	65,123
2005	64,792	78,189
2006	69,230	90,947
2007	76,828	108,645

### GRANTS

Grants approved since 1965 from the income earned on investments have been:

FIVE YEARS ENDED	\$ 000's
1970	93
1975	379
1980	1,324
1985	3,382
1990	7,712
1995	11,676
2000	9,883
2005	20,484

YEAR ENDED	\$ 000's
2001	3,133
2002	4,192
2003	3,552
2004	5,286
2005	4,321
2006	4,649
2007	4,400

TOTAL GRANTS	63,982
--------------	--------



## Financial Summary

INCOME STATEMENT FOR THE YEAR ENDED 30 JUNE 2007		2007 \$	2006 \$
REVENUE	Income from investments	16,195,530	11,651,082
TOTAL EXPENSES		(1,092,111)	(891,156)
OPERATING SURPLUS		15,103,419	10,759,926
	Grants approved during year	(4,399,516)	(4,649,069)
SURPLUS FOR THE YEAR		10,703,903	6,110,857
	Attributable to Capital account [1]	7,630,054	4,419,109
	Attributable to Income account	3,073,849	1,691,748
		10,703,903	6,110,857

1 Surpluses attributable to capital account of \$7.6 million comprise \$5.3 million of dividends from share buybacks, and \$2.3 million from realised capital gains (2006 comprised \$3.9 million from share buyback dividends and \$ .5 million in realised capital gains)

BALANCE SHEET AS AT 30 JUNE 2007		2007 \$	2006 \$
ACCUMULATED FUNDS	Retained surpluses – capital	79,998,460	69,531,181
	Available for sale financial assets reserve	31,820,885	21,716,749
	Other reserves	5,292,491	5,055,894
	Total	117,111,836	96,303,824
CURRENT ASSETS	Cash and cash equivalents	22,461,022	8,965,265
	Trade and other receivables	4,470,013	5,047,774
	Current financial assets	–	1,725,425
	Total Current Assets	26,931,035	15,738,464
NON-CURRENT ASSETS	Other financial assets	94,563,933	84,427,340
	Office furniture & equipment	31,024	33,196
	Leasehold improvements	6,653	20,228
	Computer equipment	27,694	7,429
	Artworks	7,260	–
	Total Non-Current Assets	94,636,564	84,488,193
TOTAL ASSETS		121,567,599	100,226,657
CURRENT LIABILITIES	Trade & other payables	4,455,763	3,922,833
TOTAL LIABILITIES		4,455,763	3,922,833
NET ASSETS		117,111,836	96,303,824
HELD FOR	Corpus – Investments	108,644,909	90,941,411
	Other	91,517	60,853
	Income	8,375,410	5,301,560
		117,111,836	96,303,824

## An Historical Insight: The Smiths in Australia

As in previous Annual Reports, we continue to provide a variety of insights into the personal background of our benefactress Helen and her lasting legacy. This year we look at her paternal family, the Smiths, following their emigration from Scotland to Australia. We are indebted to author Jane Sandilands for the following extracts from her forthcoming biography of Helen Macpherson Smith.

Adventurous and a strong family spirit were hallmarks of the seven Smith brothers, their sister, and their two cousins who decided to make new lives and opportunities for themselves in Australia. In doing so, they preserved their ties with Scotland through letters, through business deals, and by trips back home.

In 1850, Charles and John, the two eldest sons of John Smith of Darnick and brothers of Robert Smith, Helen's father, came to Australia, leaving Liverpool in April 1850. In their father's diary, there is mention of him setting out for Liverpool with Charles and John. Once in Liverpool, father and sons separated to follow different business appointments. A rather wistful entry, dated 26 April 1850 is recorded: "Left for Liverpool by train, could not find my sons in Liverpool. Left at 2.30 for Carlisle." Although the family members were separated, the strong relationship of father and sons remained. The departure of Charles and John was followed four years later by brothers William and Thomas, aged respectively 20 and 22, who left Liverpool on 3 June 1854 on the *Morning Star*, under the command of Captain E.J. Allen. Brothers Robert and George followed some time after 1854 and James arrived in 1857.

Their elder sister, Jeanie Smith, also known as Jane, came to Australia to keep house for her brothers. Their two cousins, Adam and James Smith, sons of Thomas, also joined the Smith clan in Australia and became timber merchants in Ballarat.

The Smith brothers established themselves as timber merchants, C & J Smith, and were listed in the Melbourne ratebooks of 1856 as carrying on this business on land between 5 Albert Street and Victoria Parade, East Melbourne.

Charles and John Smith had established their Collingwood Sawmills and Timber Yard at Eastern Hill earlier than mid 1854. While it was located in East Melbourne, it probably supplied timber to the area that is now known as Fitzroy and Collingwood, and was collectively all known as Collingwood until 1858 when the Municipal District of Fitzroy was created in September 1858.

In June 1852, the brothers employed John Hay Goodlet, a fellow Scot. Goodlet went to Sydney in 1855 with a shipload of American doors, sold them profitably, began importing timber from Jervis Bay and set up a sawmill in Erskine Street with his own wharf. About 1862, James Smith, the last of the Smith brothers to arrive in 1857, became Goodlet's partner. By 1881 they were sawing over 100,000 ft (30,500 m) a week and had two other coastal mills, brickworks at Granville producing 200,000 bricks a week and a pottery in Surry Hills making drain and sewage pipes, tiles, terra cotta and chimney pots and stoneware. James gave generously to charitable institutions and his major interest was the Presbyterian Church.

In September 1854, William Smith wrote to his mother in Scotland on his arrival in Australia: "We got on shore in the afternoon by sailing up the Yarra Yarra, the whole of us enjoying the scenery and everything else amazingly, although it is nothing extraordinary, so glad were we after our long captivity to set foot once more on terra firma. We arrived at Chas. and John's place on the top of Eastern Hill in good time for tea and there met John in colonial costume, high outside top boots and broad brimmed straw hat looking very much as at home, fresh coloured and looking well altho not very fat. He is a go-ahead pushing man of business now and Charles and he do a first rate trade paying about £50 a week to Draymen alone for bringing goods from the wharf." The timber yard, William



reported, sold “Timber Doors, Windows, and in fact everything connected with the building trade”.

A month later, William reports: “The timber trade still goes on flourishingly enough and at a good profit too in proof of which Chas. and John have just erected a new office in the front corner of the store as the last one was too small, being merely the verandah of the house enclosed.” He added that “By the way Chas. and John have actually got the credit of being honest men to deal with, which is a very great admission here, where it is the custom to look on every man as a knave, which however has its advantages as people are not at all thin skinned about being suspected, but look on it as a matter of course”.

The Smith timber business was a lively one, as shown by the many advertisements placed by them in *The Argus* newspaper. They dealt not only in timber, advertising ‘50,000 feet Weatherboards, cheap’ on 26 August 1853 but also sheet lead, barrels of cement, plaster and whiting, slate and glass doors. The timbers were Baltic pine, Oregon spars, bluegum logs, cedar, Kaurie [sic] and blackwood logs and the advertisements sometimes added the assurance ‘The goods, all of the best quality, being kept under cover, are dry and light for carriage’.

The business featured in the Wanted advertisements as well. And in September, 1854, ‘Wanted horse drays for Castlemaine’ appears. In 1855, they asked for tenders for ‘two miles of fencing about 23 miles from Melbourne’. In the same year and in the spirit that supported their countrymen, they sought ‘a farm servant, must be able to plough. Scotch preferred’.

Elder sister Jeanie Smith was obviously a great help in keeping house for her brothers. In a letter to her from her father on 10 June 1859, he writes: “I hope you will pay us a visit before long, if not to remain

with us altogether, which last I would prefer, but you are of so much use to your brothers and so much appreciated, that the wish is almost a selfish one. Some of them will be getting wives likely at no distant date. I think Charles should be looking about him for something of the kind, but as far as Mother and I can understand him, he has no engagement as yet nor any prospect of the kind”.

Although the name of the firm of C & J Smith included only two of the brothers, others were involved in the business at various times. The Victorian Government Gazette records a Dissolution of Partnership in 1877 as follows: “Notice is hereby given that the partnership carried on under the firm of C. & J. Smith as timber merchants at Albert St. E. Melbourne has this day been dissolved by mutual consent. The business will in future be carried on by Robert Smith alone, under the style or firm of C. & J. Smith. Dated 13 October 1877, Robert Smith, Adam Smith”. Adam Smith was Robert’s cousin and the witness was Robert’s brother-in-law, James McPherson, solicitor, Melbourne. As Charles Smith died in Hobart in 1862, aged only 39, this may have legally put in place what had been a fact for many years. Charles was buried in the Cemetery of St Andrew’s Presbyterian Church in Hobart. The index to early Hobart Cemeteries records: “Smith, Charles. Timber merchant, Melbourne, born at Darnick, Roxburghshire, Scotland, 2 Nov. 1822, died at Hobart Town, 13 Feb 1862”. The firm of C & J Smith continued at 18 Victoria Parade until 1883, then disappeared from the directories.

Timber merchant businesses were also carried on in Hobart, Sydney and Ballarat by various Smith family members. James went to Sydney and became a partner with Mr Goodlet in ‘Goodlet and Smith’. The fourth son of John and Alison Smith, James died in Sydney on July 31, 1887. His obituary in *Australian Men of Mark* details the life of a man

“What comes through clearly in the record of the life of the Smiths in Australia is that the decision to emigrate and build a working life was not easy. They had difficult times financially, there were setbacks as well as opportunities but they confronted them both with the indomitable spirit for which Scots have become renowned the world over.”

whose life was “marked deeply by a steadfast adherence to Christian principles”. James had a severe railway accident about 20 years before his death, from which he never recovered. A triple stained glass window in the form of a tribute to James is in the Roseby Memorial Church in the inner Sydney suburb of Marrickville.

What comes through clearly in the record of the life of the Smiths in Australia is that the decision to emigrate and build a working life was not easy. They had difficult times financially, there were setbacks as well as opportunities but they confronted them both with the indomitable spirit for which Scots have become renowned the world over. Above all, they worked together as a family to give themselves the best chance of success in a new country.

Robert Smith married Jane Priscilla Macpherson on 20 February 1873 at her parents’ house Helena House in Nicholson Street, Fitzroy. Two years later, in a letter to his brother, Robert’s cousin Adam Smith writes: “Robert and his wife have now moved out to their house in Grey Street and I am bird alone again. They have a very nice house and have been very busy furnishing it of late. The furniture is all very handsome and generally the place has, as a book would describe it, an air of mingled elegance and comfort. Mrs Robert is very amiable and very pleasant and I liked very well to have her as an inmate of the house. We had occasionally in the evenings a three handed game at cribbage which was our little dissipation but which I expect you and Agnes do not indulge in.” There was only one child to the marriage, our Benefactress, born Helen Macpherson Smith.

In April 1875, Jane Priscilla’s father died and Robert’s cousin, Adam Smith, writes home to his brother in Scotland: “McPherson, Robert’s father in law died about a week ago. We have not heard definitely how everything is settled and you need not say anything unless you have it from Aunt John’s people. There is a trust made somehow and the sons get some £4000 a year all but the eldest who comes in with the girls who each get £500 a year and £10,000 I think it is when the trust is broken up”.

Apart from her being perceived as very amiable and pleasant, we know little about Jane Priscilla. For the times, it was unusual for a family to have just one child. A clue to the reason may be found in another of Adam Smith’s letters, writing to his elder brother in Scotland, on December 29, 1875. It reads: “Mrs Robert is away rustivating in the

country at present. She has had a long illness poor thing. Her baby is a big girl toddling about.” At that stage, Helen, “her big girl toddling about”, was 20 months old. If, in an age when the health of women was a very private matter, Jane Priscilla’s long illness was known to the men of the family, it is possible that this was related to Helen’s birth and the reason that she was an only child.

Between 1881 and 1889, the whereabouts of Robert, Priscilla and daughter Helen are unclear. However, it appears Robert and Priscilla spent time in Australia, Europe and England, and Helen probably boarded at Glenview Boarding School in Melrose, Scotland while her parents were travelling. The family returned in 1889.

John had returned to Scotland some time before 25 November 1865, when he made his Will. It was fifteen years since his and Charles’ pioneering arrival in Melbourne. In his Will, he states he is ‘late of the City of Melbourne and lately residing at Tower Cottage, Darnick, thereafter at Darnlee, both near Melrose.... wood merchant....with a view of settling my affairs so as to prevent disputes after my death do hereby give, grant and assign and dispose to and in favor of Violet Smith, my wife, John Smith, farmer, Leaderfoot my brother in law, Andrew Smith, farmer Castlemaine my brother and William Smith, timber merchant, Melbourne my brother (as) Trustees, also to be tutors and curators of my children during their pupilarity and minority...’

The Death Certificate shows that John Smith died in The Lodge, Bournemouth, district of Christchurch, County of Southampton, aged 42 years. A timber merchant, he died of Pulmonary Phthisis (tuberculosis) of 18 months duration and Haemoptysis (coughing up blood). The informant was his sister Jane Smith. There was also an affidavit from William Millar, sexton of the Abbey Churchyard, Melrose, stating that John Smith had gone temporarily to reside at Bournemouth, had died there and his body had been returned to Melrose for burial in the Abbey Churchyard on 13 May 1869.

Robert’s brother Thomas died aged 56 on 7 September 1887, at Murweh, The Esplanade, St Kilda. He was buried in the Melbourne General Cemetery. The obituary in *The Argus* shows that Thomas was both well known in pastoral circles and served on the boards of directors of major companies of the day.

The Smith brothers may have had a predisposition to weakness of the lungs, as William Smith died of



Jane Priscilla Macpherson and Robert Smith (Helen's parents) and her uncle William Smith

pneumonia and Thomas of congestion of the lungs. A notice in *The Age* records that William died in Territet, Montreux, Switzerland on 20 January 1900. His obituary in *The Argus* reads:

"The late Mr William Smith, whose death, after a brief illness, is announced today, was born at Darnick, Melrose, Scotland and while still a youth had five years training as an articled clerk in a solicitor's office. He came to Victoria in 1854 and was engaged in business for several years.

He had been for the past thirty years a director of the Colonial Bank, and he had also been a director of the Melbourne Gas Company since its inception, in addition to which he had been connected in a similar capacity with many other prominent institutions and had large pastoral interests in New South Wales. He left Melbourne in March 1889, for a prolonged holiday, Mrs Smith and his family accompanying him, and he was spending the winter months of the present year in Switzerland at Territet, a suburb of Montreux, where he died of pneumonia. He became a resident of St Kilda in 1881, and for a long time past his home has been Ravenswood, the house in Alma Road, which he built for himself some fifteen years ago."

As a director of the Colonial Bank of Australasia, he became Deputy Governor under Sir William Clarke. Sir William was a squatter worth several million pounds. Geoffrey Blainey in *Black Kettle and Full Moon* writes Clarke "habitually had a pipe in his mouth, hand or pocket. The pipe was cheap, made of clay... almost like a child's bubble pipe. That the richest of all Australians should smoke such a cheap small pipe was seen in the 1860s as a sign of frugality as well as eccentricity."

Robert Smith died at Aberfeldie, Toorak Road, Toorak on 17 June 1904 aged in his late 60s. The funeral notice in *The Argus* on that date reported that his death was 'sudden'.

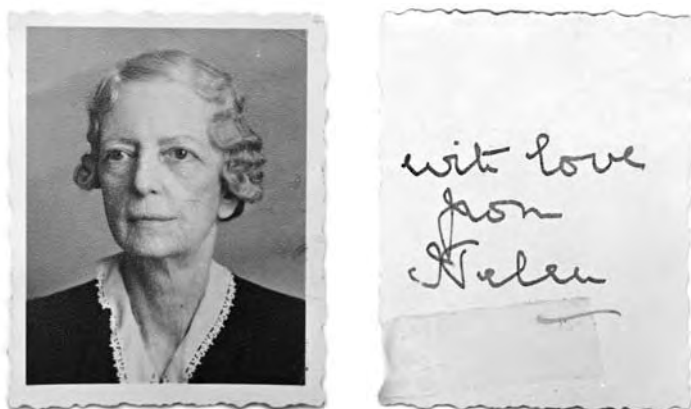
Robert Smith's Will was made on 12 September 1902 while living at Egoleen, Clendon Road, Toorak, occupation 'gentleman'. His only property was Beleura, Crown Allotment 7, parish of Moorooduc, consisting of just over 182 acres on which was a brick villa residence, stable, sheds and outhouses, valued at £3574.18.9 and which was bequeathed to his wife Jane Priscilla. She and Helen shared the estate, and Priscilla and Frederick Hamilton Wilson were appointed joint executors. On the death of one of these two, Helen was to become executor.

A codicil to Robert's Will was made on 20 April 1903 when he was living at Beleura, in which he appointed his son-in-law William Schutt of Clendon Rd., Toorak as co-executor with Jane Priscilla and Frederick Hamilton Wilson. In the event of the death of any two of these, Helen could act

Robert's personal property totalled almost £18,000, which with Beleura, made a total of £21,544.2.2. Liabilities reduced it to £12,952.12.6.

Jeanie ultimately returned home to Scotland, as did her brothers John and William. The remaining seven men died in the cities where their timber businesses had prospered, namely Melbourne, Hobart, Sydney, and Ballarat. Only Robert and George are buried in the Smith family plot in Melbourne General Cemetery.

The Smiths made an indelible mark in the four main cities of colonial Australia where their timber businesses operated, particularly in Melbourne and Sydney. They were sound businessmen, occasional risk takers, and took advantage of opportunities. Above all, they were a closely knit family, helping each other and being helped by family members in Scotland. They also made valuable contributions to colonial society. More importantly, the business achievements of Helen's father, Robert Smith, coupled with the inheritances of her mother Priscilla, contributed significantly to the eventual wealth of today's Helen Macpherson Smith Trust.



Helen's handwritten note reflects the generous intention of her legacy to the many Victorian charities that have benefited from that generosity, and to those that will do so in the future.

ON THE COVER

Shaun Gladwell

*Storm Sequence*

2000

Video still courtesy the artist  
& Sherman Galleries, Sydney.  
From the NETS Victoria touring exhibition  
*Loop: new Australian video art*

(see page 26 for details of our grant)



